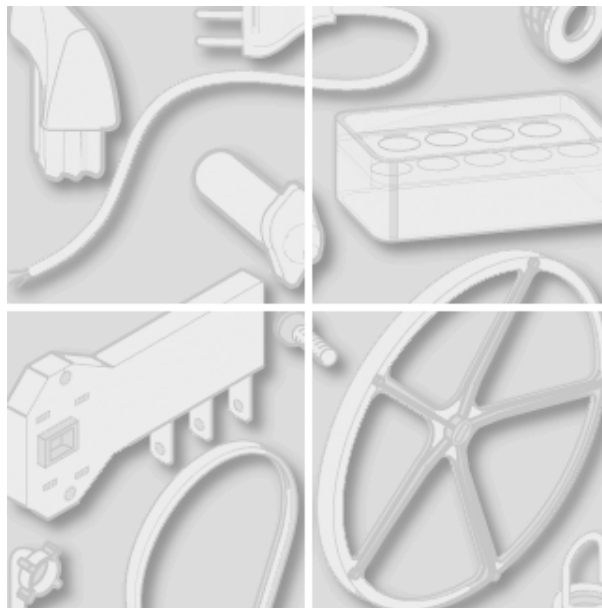


**Indesit** Company



Model type:  
**TNFP3303TEL**

Commercial code:

## General notes

### Technical Documentation guidelines

---

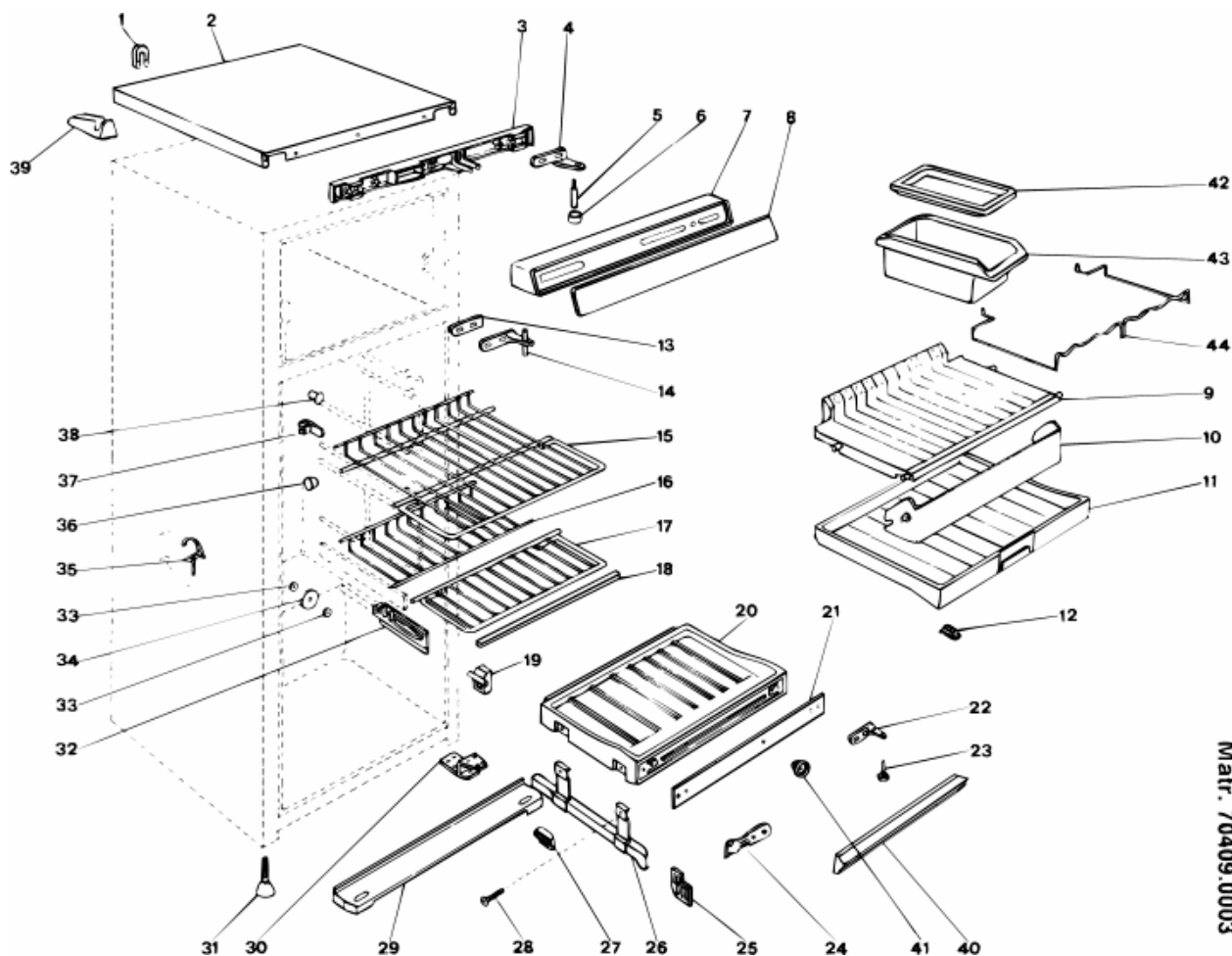
---

You can find herewith some generic information to simplify consulting of technical documentation:

1. Models of same range share the same exploded views, which report the richest set of spare parts: generally, a model does not necessarily have a related spare part for each particular shown on exploded views.
2. Some spare parts can not be represented directly on the exploded views (instruction booklets, specific kit, etc...). You can find those codes in the spare parts list with the same reference of particular where spares are installed or with references 099, 999. Instruction booklets, once managed, appear with 000 reference.
3. On the higher right site of each exploded view there is a serial number which indicates the beginning of the production of certain range: some models might have more than an exploded view for a given category, each distinguished by a different serial no. and linked to another spare parts list, In this case, serial no. is required to supply the right spare part code. Exploded view to be considered is the one with a more recent serial no. but previous than the one of the model that needs assistance.
4. Exploded views might require further updates even after publishing. Addition of new spares will go on following the already existing numeration references. Revision number of an exploded view is shown into last four digits of serial number into upper right hand corner.
5. The spare parts list associated to an exploded view shows related codes of spares managed for a certain model; for each spare part other informations are available:  
  
REF: reference no of spare into a table; SUBSTITUTE: list of spare(s) which can replace a code but that keeps same functional characteristics  
  
INDUSTRIAL CODE: list of variables of a model (shown into model label) where such spare is used; NOTICE: code of information(s) to refer to complete technical intervention, track for changes or to find correct spare part code.
6. Some notices, into a same section are generic therefore cannot be directly linked to a spare part. In order to assist a model in the best way as possible, it is helpful to pay attention to all notices and constantly verify documentation updates
7. Technical documentation cover shows model name and its commercial codes

5133030

Exploded views



Matr. 70409.0003

5133030

Spare parts list

Ref.	Code	C cep.№	По	Substitute	Description	Notice	Industrial
001	C00016413			1 x C00028137	cord lead'rf340-rf340el'		
002	C00026582			1 x C00040183	white26 cover 600x492x32 (hole-		
002	C00040183				white26 cover 600x492x32 (hole-		
003	C00026590				white26 dashboard base no-frost		
003	C00040189				white26 dashboard base no-frost		
004	C00021990				hinge upper lh		
004	C00021991				hinge upper rh		
005	C00015745				hinge pin - m6x(5+14)		
007	C00028437				grey1 l set dashbpard m.60	0513189	
007	C00030660				grey1 l set dashboard m.60(20		
009	C00025232				white upper meat-holder tray		
010	C00025231				neutral col.44 flap tray meat-		
011	C00025229				white lower meat-holder tray		
012	C00025230				slide foot (lower meat tray) - white		
013	C00025891			2 x C00032223	no-slip gasket central hinge		
014	C00025907			1 x C00042672	zncr central hinge (non-slip		
				1 x C00042673			
015	C00023305				white grid inclinable wxhxd		
016	C00023304				white retracting grid		
017	C00023303				white overturnable grate		
018	C00023316				trim - wire shelf white		
019	C00024308				white lateral pipe separator		
020	C00024273				white separator	0513254	
021	C00024301				front plate (fridge floor) - white		
022	C00022011				lower hinge chromium	0513253	
023	C00017812			1 x C00032099	hinge pin (m8x5-20)		
024	C00022013				separator fixing plate chromium	0513254	
024	C00047949				separator fixing plate cromium	0513254	
025	C00024340				runner spacer rh - white		
025	C00024341				runner spacer lh - white		
026	C00024290				separator refrigerator runner dx		
026	C00024292				separator refrigerator runner sx		
026	C00029242				runner support rh		
026	C00029243				runner support lh		
027	C00024305				support (fridge floor) - white		

5133030

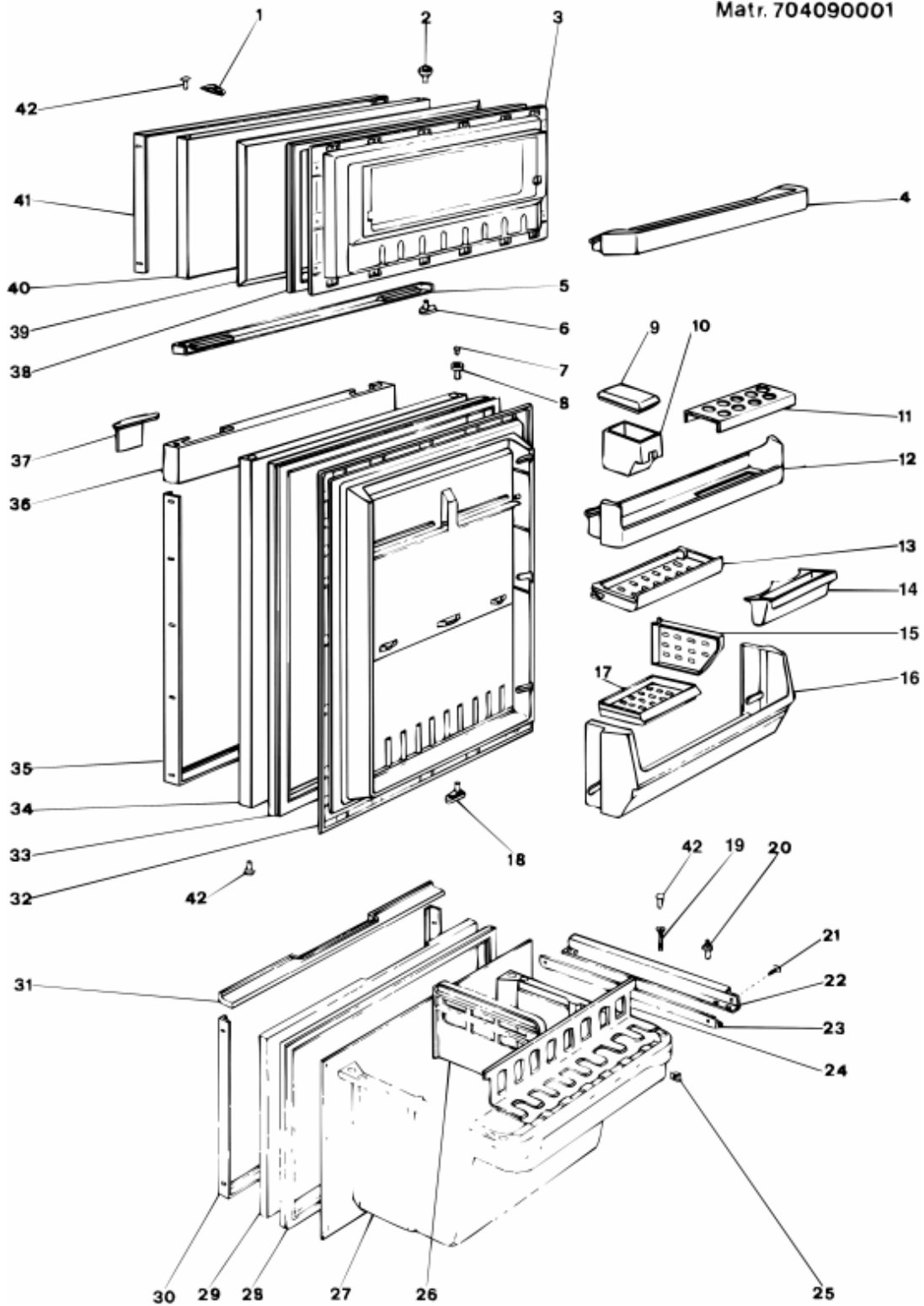
Spare parts list

Ref.	Code	С сер.№	По	Substitute	Description	Notice	Industrial
028	C00022017				винт m5x15 ts		
029	C00023283				base dx-sx aluminium		
030	C00023297			1 x C00043862	lower hinge dx-sx zncr		
031	C00017771				foot 10x36- adjustable		
031	C00032232				foot support m10 (37x55 mm)		
032	C00023300				support rh (wire shelf) - white		
032	C00023301				support lh (wire shelf) - white		
033	C00021591			1 x C00041042	"o" washer 8x4x2 - thermostat		
034	C00026592				disc (temperator sensor probe) -		
035	C00021989			1 x C00022198	blue swab refrigerator 20x30		
036	C00023299				bush 6,8mm (wire shelf) - white		
038	C00011286			1 x C00114785	заглушка белая d.4,5x8 mm		
039	C00017792				spacer - condenser		

5133130

Exploded views

Matr. 704090001



5133130

Spare parts list

Ref.	Code	С сер.№	По	Substitute	Description	Notice	Industrial
001	C00026570				push-button (fan no-frost) - white		
002	C00024267				втулка белая 7x21,5 mm		
003	C00025238				white inner door freezer'impronta		
004	C00025241			1 x C00028106	white freezer shelf mod.600 (no-		
005	C00023280				aluminium recessed knob door		
006	C00022166				white bush for door stop (h=6mm)		
007	C00026519				blanking plug white 26 (bush)		
008	C00023343				втулка белая с отверстием		
009	C00025236				cover - small box white		
010	C00025237			1 x C00032298	small garlic box - white		
010	C00026609			1 x C00030609	white smal box for onion		
010	C00026610				small lemon box - white		
011	C00023312				лоток для яиц (9) белый		
012	C00023272				sliding separator (bottle shelf) -		
012	C00026551			1 x C00023341	white boxes shelf serig.(no-frost)		
012	C00026722			1 x C00023270	white shelf bottle mod.600 (no-		
013	C00023342				hinged shelf (218mm) - white		
015	C00025235				white separator for marsupial shelf		
016	C00025233			1 x C00028112	white shelf with marsupial		
017	C00025234				white smal sink for marsupial		
018	C00022165				white bush for door stop		
019	C00022029				screw m5x14 tc		
020	C00022030				shoulder screw m5x10 - door		
021	C00022017				ВИНТ m5x15 ts		
022	C00022031			1 x C00029240	white runner drawer dx blum		
				1 x C00029241			
				1 x C00029242			
				1 x C00029243			
				1 x C00029965			
				1 x C00029966			
022	C00022032			1 x C00029240	white runner drawer sx blum		
				1 x C00029241			
				1 x C00029242			
				1 x C00029243			
				1 x C00029965			

5133130

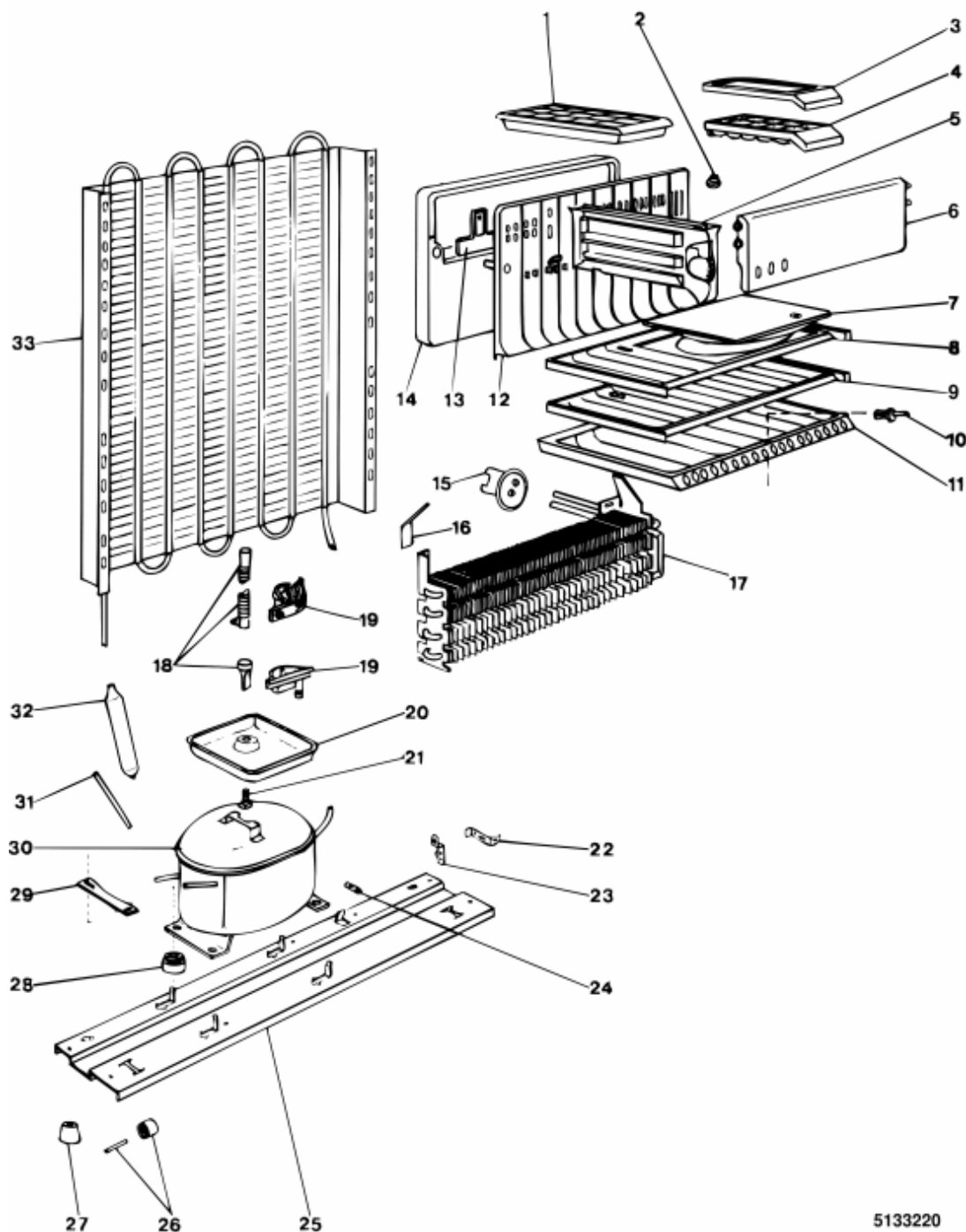
Spare parts list

Ref.	Code	C cep.№	По	Substitute	Description	Notice	Industrial
022	C00029240				drawer runner lh - white		
022	C00029241				drawer runner rh - white		
023	C00022033			1 x C00065734	drawer angle bracket - white		
023	C00022154				plastic washer (12x6,1x3mm) -		
024	C00024276				adjustable drawer rack -		
025	C00022034				plate m5 (20x20x4)	0513185	
026	C00022076				drawer partition - white		
027	C00024288				cellar drawer (w= 491 mm) -		
028	C00024278				прокл. серая у58 дверцы отд.		
029	C00024350			1 x C00024285	white26 third door recessed		
030	C00024337				aluminium third door frame (wxh		
031	C00024349				aluminium recessed knob85 third		
032	C00024347				white door liner refrigerator(bxh		
033	C00024279				прокладка дверцы		
034	C00024348				white26 refrig.door recessed		
035	C00024339				aluminium refrige.door		
036	C00023808				alum.recessed knob refrigerator		
037	C00023367				aluminium label holder tropical		
038	C00025240				прокладка дверцы морози-ка		
039	C00025239				freezer inner door insulation		
040	C00023511				white26 frezer door recessed		
041	C00023500				freezer door frame		
042	C00021255				blanking plug (8,5mm) - white		

5133220

Exploded views

Matr. 704090002



5133220

5133220

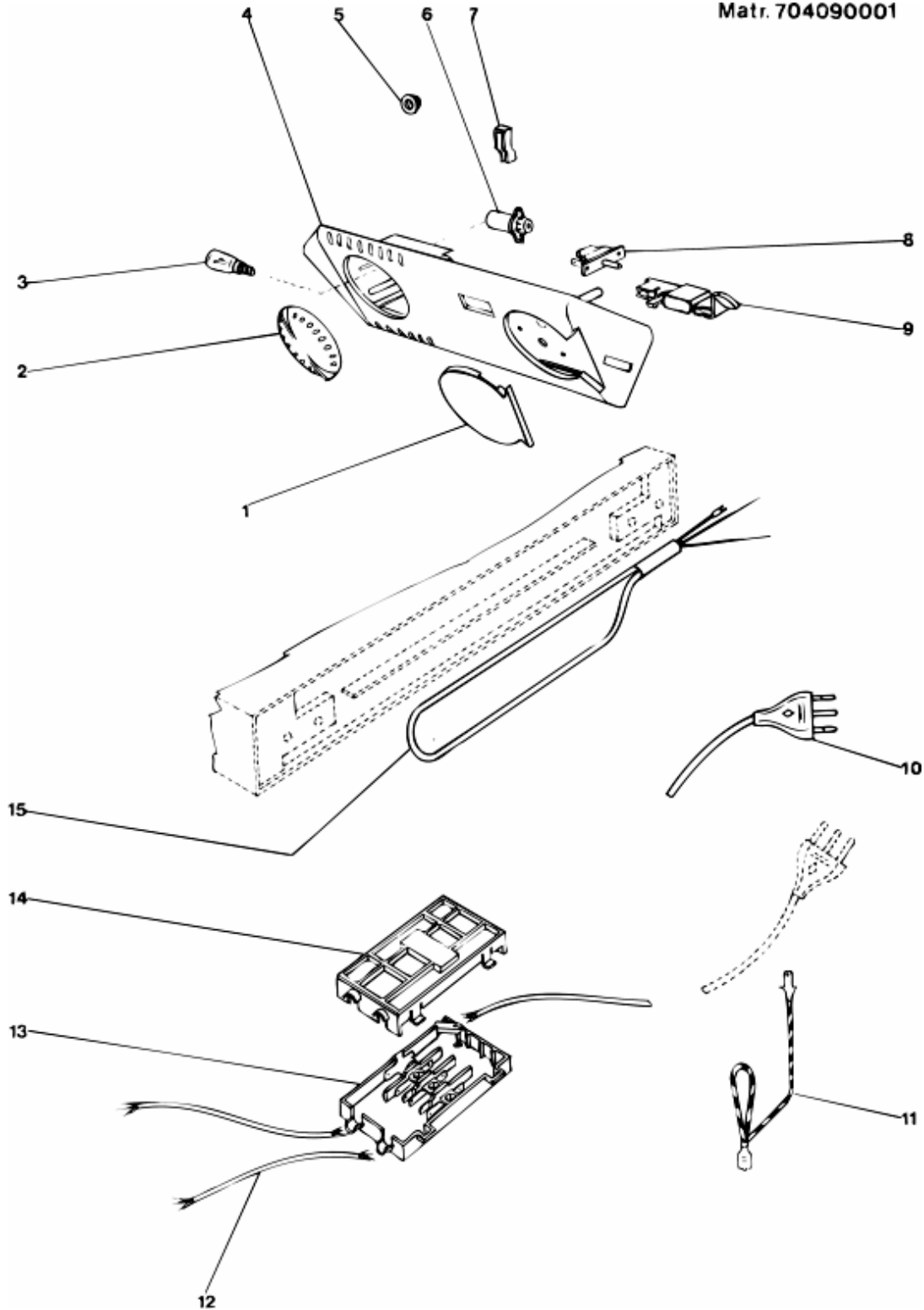
Spare parts list

Ref.	Code	С сер.№	По	Substitute	Description	Notice	Industrial
001	C00026608				ванночка для льда 246x110		
002	C00007225				пластиковый упругий стопор		
003	C00026607				cover - ice tray (plastic)		
004	C00025221			1 x C00117027	ванночка для льда белая		
005	C00026597				ice tray support- white		
006	C00025227				freezer flap door (l=342)- colour		
007	C00026593				панель акк. холода белая с		
008	C00026598				white separator freezer(493x276)	0513231	
010	C00014612				расширитель		
011	C00025228				freezer base tray (494x351) -		
012	C00025223				днище морозильной камеры		
015	C00026681				pipes grommet (de.24 x 21 mm)		
016	C00026682				fuse-thermic fixing plate (no-frost)		
017	C00025211				freezer evaporator (b=350x153)	0513181	
018	C00026614				drip w.outlet pipe-rubber		
018	C00028100				non return valve - defrost water		
018	C00028101				connector - defrost pipe/non		
019	C00026947				drip water outlet pipe sping (no-		
020	C00028114			1 x C00009337	defrost water tray - metal		
021	C00010517				screw m6		
023	C00008591				earth plate compressor aspera-		
025	C00013997				держатель компрессора 586 x		
028	C00006495			1 x C00032453	rubber shock absorber -		
029	C00008471				пластина крепления		
030	C00017856			1 x C00104762	compressor b1116a-b1116b 220-	0513203 0513218	
030	C00025755			1 x C00104762	comp.embraco ff8,5bk 220-240v		
031	C00009319			1 x C00042354	charging pipe 6x70		
031	C00031162				suction connection -	0513205	
032	C00006418				filter		
033	C00023282				конденсатор h=1000+200x591		

5133330

Exploded views

Matr. 704090001



5133330

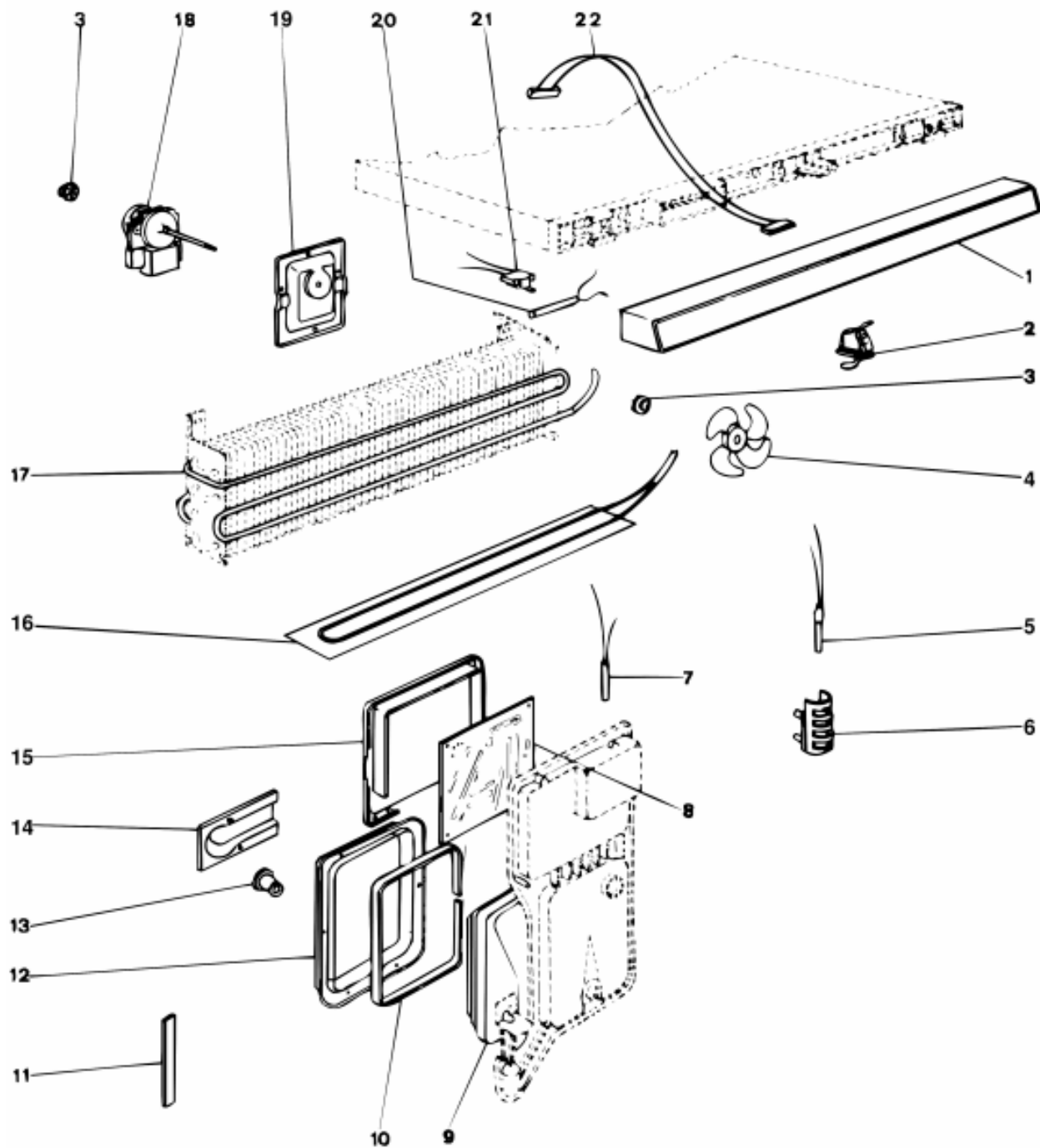
Spare parts list

Ref.	Code	С сер.№	По	Substitute	Description	Notice	Industrial
001	C00026612				white false knob box	0513223	
001	C00038969				white false knob box center-		
002	C00023288				lamp cover		
003	C00006522				лампочка 220-240 в/15 вт (e14)		
004	C00023295				thermostat box(no switch hole)-	0513223	
004	C00038970				thermostat box white center-		
005	C00007225				пластиковый упругий стопор		
006	C00009882				патрон для лампочки e14		
007	C00009888				кабельный зажим		
008	C00008867				выключатель освещения libero		
009	C00023294				white push-button light switch		
010	C00010097			1 x C00029307	supply cable 3x0,75		
015	C00026725				anti condensation heater 5w		

5133420

Exploded views

Matr. 704090002



5133420

5133420

Spare parts list

Ref.	Code	С сер.№	По	Substitute	Description	Notice	Industrial
001	C00028437				grey11 set dashbpard m.60	0513189	
001	C00030660				grey11 set dashboard m.60(20		
002	C00025243				fan push-button n.a. 1051 (no-		
003	C00025215				прокладка резиновая двигателя		
004	C00025218				fan blade (mes)		
005	C00026604			1 x C00026601	probe eutectic l.850 mm faston	0513189	
005	C00027214			1 x C00027220	probe refrigerator l.1200 mm	0513189	
005	C00027220				probe refrigerator l.1450 mm	0513189	
005	C00028105				датчик аккумуля. холода l.850mm		
005	C00030655			1 x C00032408	probe refrigerator l.1450 mm		
005	C00030656			1 x C00028104	probe refrigerator l.1200 mm		
006	C00026591				cover (temperature sensor) - white		
008	C00026606				card mask microprocessor	0513189	
						0513191	
008	C00027258			1 x C00026606	card masck microprocessor faston	0513191	
						0513193	
008	C00030657				плата микропроцессора .mask	0513192	
008	C00030658			1 x C00030657	card masck microprocessor molex	0513193	
009	C00025244				insulation lower box (no-		
010	C00026652				adhesive sponge seal (7x610x4)		
011	C00026654				adhesive sponge seal (30x150x4)		
012	C00025245				lower cover - grey		
013	C00026960				wiring bush (no-frost)		
014	C00026687				wiring protection 194 mm (no-		
014	C00028116				wiring protection 194mm (no-		
015	C00026633				upper cover - grey		
016	C00025210				defros.res.20w 220v(faston)	0513189	
						0513212	
016	C00028085				нагреватель для оттаивания 20	0513212	
017	C00027622				тэн 72 вт 220 в (faston)	0513189	
017	C00028084				элемент нагрев. 72 вт 220 в		
018	C00025216			1 x C00028078	fan-motor (mes-plaset) connector	0513189	
018	C00028078				двигатель вентилятора		
019	C00025217				cover - fan-motor		
021	C00027222			1 x C00028083	therm.elth261177 + fuse	0513189	

5133420

Spare parts list

Ref.	Code	C cep.№	По	Substitute	Description	Notice	Industrial
021	C00028083				тепл. защ. реле elth 261n356 +		
021	C00030291				adhesive small spogne		
022	C00026790				10 wire flat cable display	0513189	
022	C00028069				20 wire flat cable display board		

## Notices

## 0513178: 3W HEATING ELEMENT FOR SEPARATOR IN "CELLAR" COMPARTMENT

-----  
The current anticondensation resistance mounted in the separator of the refrigerator compartment of the 3 door models has been modified as follows: the length according to the 600 or 550 refrigerator module; the type of cap or faston terminal for connection to the terminal board.

The following prospectus illustrates the resistances which are currently used:

.BF bold

Models DF2853T and DF330S3T module 600 in class N and T

.pf

026585 - 3W 220V, 325 mm long resistance with cap terminals.

This resistance will also be used on the new no-frost mechanical models.

026725 - 3W 220V, 325 mm long resistance with 4,8x0,8

female faston terminals.

This resistance is used specifically for all the electronic versions of the no-frost models. An Aspera B1116A compressor will in fact be mounted on these models with a Blu-Box type terminal board with faston connections.

.bf bold

Models DF2603T and KDF2603T module 550

.pf

024274 - 3W 220V, 285 mm long resistance with cap terminals.

This resistance is used specifically for models DF2603T with exception of the French version produced under the (NF) trademark.

022050 - 3W 220V, 285 mm long resistance with 4,8x0,8

female faston terminals.

This resistance is used specifically for model DF2603TF, produced for France under the (NF) trademark.

## 0513181: NO-FROST FREEZER EVAPORATOR MADE TO RUN QUIETER

-----  
The modification for the noiseless freezer evaporator has been introduced as from serial no. 802010001 on the no-frost mechanical and electronic versions.

The following parts have been modified:

025211 - ventilated evaporator (h=1590 mm) (The position of the input and output pipes is 30 mm lower and the diameter of the delivery pipe has been reduced from 6 to 4 mm)

025222 - freezer bottom insulation (the bottom corners project by 30 mm)

The new freezer evaporator may be used to replace the old type. In this case however the fixing holes on the freezer cell should be re-made with a 3 mm diameter bit (depth 10 mm).

-VT cell and NT evaporator take the holes 32 mm higher

The old fixing holes of the evaporator should be closed with silicone.

The modified insulation bottom should also be installed.

If the old evaporator is to be used instead of the new type, the following problems will be encountered:

-when the new holes are made on the freezer cell (NT cell and VT evaporator take the holes 32 mm lower), the holes coincide outside the sheet plate reinforcement behind the refrigerator cell side.

-the freon in the old evaporator starts expanding in the rising section of the delivery pipe (immediately after the weld to the capillary) and therefore the evaporator is noisy.

Noise on the new evaporator has been eliminated by modifying the diameter of the delivery pipe: external diameter reduced from 6 to 4

mm and the internal diameter from 4 to 2 mm in order to have a direct connection to the capillary.

In addition the section of the delivery pipe connection to the freezer evaporator coil terminates as a Venturi pipe.

With these modifications the freon starts to expand inside the freezer, immediately after the weld between the Venturi pipe and the coil in the horizontal section of the upper part of the evaporator.

In addition using the old evaporator on the new products, the 30 mm which project from the bottom corner of the bottom insulation must be removed.

The new freezer evaporator and the new freezer bottom insulation will be indicated under the same sat codes as the previous versions.

## 0513185: REPLACEMENT OF PLATE (20X20) FOR FASTENING GUIDES ON 3-DOOR UNITS

---

On the three-door version refrigerators, the M5x15TS (022017) screw used for fixing the guides to the refrigerator separator or to the cellar compartment drawer, has been replaced by 8Px19,5xTSP self-threading screws.

The 8Px18x12 plate must be used with the self-threading screw instead of the square M5 (022034) plate.

On the refrigerator separator and on the cellar compartment drawer the plate housings have been modified (the depth has been decreased from

10,1 to 7,1 m.).

On the new modified parts the previous fixing system may be used by changing the sizes of the square plate from 20x20 to 20x14 mm .

The new fixing system may be used on premodification models.

The modified spare parts are indicated under the previous sat code.

## 0513189: NOTICE FOR MOLEX CONNECTIONS ON NO-FROST FRIDGE

---

As from serial no. 903150001 the new Molex connector system will be introduced in all no-frost refrigerators.

The new spare parts with molex attachments are not interchangeable with premodification parts. The description for the spare parts has been changed by adding the word Molex or FASTON to indicate the type of attachment.

The ELTH 261356 (028083) thermoprotector has different attachments and new ratings (activates at +8°C/disactivates at -10°C) with respect to the previous model, the ELTH 261177 (027222).

With the new ratings the plastic plate fitted during assembly on the freezer evaporator has been eliminated (definitely for all versions); the adhesive sponge (030291) is still fitted around the thermoprotector.

On the electronic version the dashboard unit (030659

030660-030661-030662-030663) are fitted with a flat 20 wire cable connecting these to the electronic board with Molex attachments. On the previous version the dashboard and the electronic board with Faston attachments are connected with the round 10 wire cable.

The description of the dashboard unit NT and VT indicates whether this is for the 10 or 20 wire cable.

The flat cable has led to the modification of the cabling sheath

026687 which has been replaced by the 028116. The latter may also be fitted on premodification models.

## 0513191: RELEASE2 CARDS WITH FASTON TERMINALS

---

As a result of the introduction of new electronic boards (release-2) on no-frost refrigerators, these boards will be supplied both with Molex and Faston attachments.

The release-2 boards with Faston attachments will be indicated under the previous sat codes (release-1):

-code 026606 for Italian and European models

-code 027258 for Spanish and Greece models

These new boards are interchangeable with the release-1 board (including the version with radio anti-disturbance filter).

With respect to the diagram (5130412A) shown in the Servicing

Manual the new boards have the AC contacts on the bottom right hand side.

### IMPORTANT

Release-1 boards can be transformed into release-2 boards by replacing the microprocessor integrated with other components on the main board. In this case the AC contacts remain on the bottom left hand side.

### ---AUTOTEST

---When the refrigerator is switched On the first time and after a power failure, an automatic autotest lasting approx. 1 minute is carried out.

This autotest procedure is as follows: all the LEDs flash (three times), the compressor and fan operate continuously, the freezer defrosting heating elements switch ON intermittently.

After the initial flashing the system sets automatically to

+5°C in the refrigerator and at -12°C (alarm) in the freezer.

During the autotest the keyboard can not be used.

The keyboard can be used again after 1 minute and the real temperature is indicated in the freezer.

### ---FORCING A FREEZER DEFROSTING CYCLE

---To activate a forced defrosting cycle follow these steps:

:sl

---a) Check that the fast freezing is not ON.

If necessary press the button to switch OFF.

---b) Open the freezer door and leave it open.

---c) Hold down the alarm pushbutton (buzzer) until a Beep signal is given (after about 5 seconds) which indicates that the forced defrost command has been accepted.

Defrosting now starts and you may close the freezer door.

If the compressor and fan are ON when the forced defrosting starts, the compressor switches OFF immediately while the fan switches

OFF after 3 minutes and only then does the defrosting cycle start.

:esl

### ---SWITCHING ON THE LED -24°C (SUPER).

---The thermometer readings have been "manipulated" so that they visualize the temperature in the storing area and not the temperature where the foodstuff to be frozen has been stored. The thermometer therefore behaves as follows:

:sl

---a) During normal operation the -24°C LED (or SUPER LED in the case of the new restyling-88 dashboard) never switches on.

---b) During fast freezing the -24°C LED (or the SUPER LED in the case of the new restyling-88 dashboard) is always on (other than when the alarm is ON).

To "conceal" the thermometer manipulation, this LED switches on with a certain delay with respect to the start of the freezing cycle.

This delay depends on how cold the refrigerator is and ranges from a minimum of 5 minutes to a maximum of 60 minutes.

After freezing, when the freezer returns to NORMAL operation, the -24°C LED (or the SUPER LED in the case of the new restyling-88 dashboard) stays ON for another 4 or 5 minutes.

:esl

### ---DEFROSTING DURING FAST FREEZING

---All the defrosting cycles are stopped in the first 11 hours during the fast freezing cycle, so as to avoid any interference with the first freezing phase which is the most important.

A freezer defrost cycle is always carried out after the 11th hour.

## 0513192: RELEASE2 CARDS WITH MOLEX TERMINALS

---

As from the middle of July-89 the release 1/A electronic board on the No-frost refrigerator models with Molex attachments have been replaced with the new release-2 board with automatic autotest. These new board is coded under the previous sat code as follow:

code 030657 for the Italian and European models

With respect to the diagram (5130652A) shown in the Servicing Manual the new card no longer have the "JAMPER" contacts for the autotest.

Release-2 board has the following innovations:

---AUTOTEST

---When the refrigerator is switched On the first time and after a power failure, an automatic autotest lasting approx. 1 minute is carried out.

This autotest procedure is as follows: all the LEDs flash (three times), the compressor and fan operate continuously, the freezer defrosting heating elements switch ON intermittently.

After the initial flashing the system sets automatically to +5°C in the refrigerator and at -12°C (alarm) in the freezer.

During the autotest the keyboard can not be used.

The keyboard can be used again after 1 minute and the real temperature is indicated in the freezer.

---FORCING A FREEZER DEFROSTING CYCLE

---To activate a forced defrosting cycle follow these steps:

:sl

---a) Check that the fast freezing is not ON.

If necessary press the button to switch OFF.

---b) Open the freezer door and leave it open.

---c) Hold down the alarm pushbutton (buzzer) until a Beep signal is given (after about 5 seconds) which indicates that the forced defrost command has been accepted.

Defrosting now starts and you may close the freezer door.

If the compressor and fan are ON when the forced defrosting starts, the compressor switches OFF immediately while the fan switches

OFF after 3 minutes and only then does the defrosting cycle start.

:esl

---SWITCHING ON THE LED -24°C (SUPER).

---The thermometer readings have been "manipulated" so that they visualize the temperature in the storing area and not the temperature where the foodstuff to be frozen has been stored. The thermometer therefore behaves as follows:

:sl

---a) During normal operation the -24°C LED (or SUPER LED in the case of the new restyling-88 dashboard) never switches on.

---b) During fast freezing the -24°C LED (or the SUPER LED in the case of the new restyling-88 dashboard) is always on (other than when the alarm is ON).

To "conceal" the thermometer manipulation, this LED switches on with a certain delay with respect to the start of the freezing cycle.

This delay depends on how cold the refrigerator is and ranges from a minimum of 5 minutes to a maximum of 60 minutes.

After freezing, when the freezer returns to NORMAL operation, the -24°C LED (or the SUPER LED in the case of the new restyling-88 dashboard) stays ON for another 4 or 5 minutes.

:esl

---DEFROSTING DURING FAST FREEZING

---All the defrosting cycles are stopped in the first 11 hours during the fast freezing cycle, so as to avoid any interference with the first freezing phase which is the most important.

A freezer defrost cycle is always carried out after the 11th hour.

## 0513193: ELECTRONIC RELEASE2/R45 CARD ELIMINATED - SPAIN

---

As from serial no. 909060001 the same electric board currently used for the respective Italian models, are now mounted on the No-Frost refrigerators for Spain and Greece.

The board in question is release-2 version 030657, Molex attachment and automatic autotest function (see notice 192).

The previous boards with specification R45 for the electronic no-frost tropical version:

027258 release-1 with Faston attachment;

030658 release-1/A with Molex attachment;

will no longer be supplied as spare parts since they are interchangeable with the release-2 version for Italy with both the Faston 026606 attachment and Molex 030657 attachment.

The use of the new boards will make it possible to have a temperature of about 2° C less in the refrigerator compartment.

The electric diagram in the Owner's Manual between the version for Italy and the version for Spain are identical. The difference was due to the use of a R45 heating element.

## 0513197: 20W HEATING ELEMENT FOR DRIP CHANNEL FOAMED TO CABINET

---

As from serial no. 001110001 the 20W wire heating element on all the 2 and 3 door models of the Nofrost series, including the recessed model, is mounted under the drip tray of the freezer compartment and foamed together with the cabinet.

In the case of heating element failure, use the previous version with the heating element of the drip tray mounted outside (see Service Manual chapter 3.7).

## 0513203: ASPERA COMPRESSOR FOR NEW UNIFIED "B" SERIES

---

Aspera has standardized the "A" and "B" series compressor codes to the "B" series codes.

The compressors in the new series can be interchanged with the premodification models with exception of the 220-240V 50HZ models B1112B - B1116B - B1118B which have the new motors and are therefore interchangeable only with relevant equipment (see table Fig. 99 Ed.1).

The new compressors will have the same sat codes as the previous models with the descriptions showing the new codes.

The old and new codes of the Aspera compressors used as spare parts are listed as follows:

A Series B Series Standardized B Series

A1055B A1075A A1085A A1111A A1116A A1118A A1112A A3112A A2111A A2116A A3112A B1112A B1116A B1118A  
B2112A B2116A B1055A B1075A B1085A B1112B B1116B B1118B B1113A B3113A B2112B B2116B B3113A

## 0513205: SPECIAL WELDING (WELDING YOKE) ON COMPRESSOR

---

When replacing the compressor, if you find that it has a special solder (VULCAN ring and LOKPREP-61 seal), you should remove this and replace it with a standard copper-iron solder using the connection pipe (aluminium-copper) 031162. The two ends should be shaped for connecting to the aluminium return pipe (int.diam. 7.1 mm) and the compressor (ext. diam. 6 mm). After the aluminium pipe has been cut above and below the ring, and the connection pipe has been fitted, you may now make the solder (copper-iron) with the silver alloy and (aluminium-aluminium) with the Castolin or other alloy for the aluminium. The connection pipe 031162 must also be used if the special solder is lost since the seal provides no guarantee whatsoever unless the ring is held by the VULCUN clip.

## 0513212: WIDE-BAND 20W HEATING ELEMENT FOR DRIP CHANNEL

---

As from October 1991, the codes 028085 (molex attachments) and 025210 (faston attachments) refer to the 20 W drip tray with large band which replaces the previous type with narrow band. In the version with wide band, the sizes of the aluminate sheet are as follows: width 470 mm and depth 130 mm. This new heating element has major hold and heats a wider area as well as the drip tray. To ensure that the heating element is positioned correctly, remember that the drain hole of the drip tray must coincide with the slotted part of the aluminate sheet (leaving the cables on the left). Before removing the protection film from the adhesive tape, shape the aluminate sheet according to the shape of the drip tray. After having removed the protection film from the adhesive tape and before positioning the aluminate sheet, ensure that the two edges overlap in order to avoid large folds at the ends when these are fixed. Fit the aluminate sheet, keeping it towards the top and start gluing from the drain hole following along the edge of the heating element (press down firmly with your hands in order to prevent air bubbles from forming). Complete the gluing procedure with a cloth to prevent the formation of large folds at the two ends. Once the parts have been fixed, carefully fold one of the two edges of the cut into the drain hole using a medium cross-head screw driver. Do not damage the wire of the heating element. Important: after having removed the heating element you are replacing, remember to dry and clean the surface of the drip tray thoroughly.

## 0513218: ASPERA TERMINAL BOARD WITH FASTON TERMINALS

---

On Aspera compressors two types of terminal boards are used: the first one with screw attachment and the second one with faston attachment.

The compressors which at the moment use the two types of terminal boards are the following:

---B1116A 220-240V 50 Hz

---B1116B 220-240V 50 Hz

---B1116B 200-220V 50 Hz and 230V 60 Hz

---B1118A 200-220V 50 Hz

For these compressors the terminal board with faston attachment has been coded complete of the equipment while the terminal board with screw attachment has been coded separately being a common part of the other models of compressors.

The codes of the complete terminal boards are as follows:

021669- B1116AF 220-240V 50Hz terminal board

038757- B1116BF 200-220V 50Hz/ 230V 60Hz terminal board

038758- B1118AF 200-220V 50Hz terminal board

034776- B1116BF 220-240V 50Hz terminal board

The Aspera compressors coded as spare parts already include the equipment and therefore the wiring and the terminal board attachment may be incompatible while used.

The wiring with faston terminal can be modified cutting the head of the faston off; while on the other hand it is necessary to

replace the terminal end with the faston.

### 0513221: REINS. SERPENTINA(RAME) X FRIGO NO-FROST

---

As from serial no. 20729.0001 in all no-frost refrigerators (mechanic and electronic ones) the copper refrigerating coil has been reintroduced in replacement of the aluminium one in order to guarantee a higher corrosion strength of the refrigeration circuit. With the copper refrigerating coil the special cold welding is no longer used and therefore the Vulcan rings and the Lookprep-61 dope have been eliminated.

### 0513223: FAKE KNOB ON CENTER-POST BOXES

---

From serial number 20921.0001 the thermostat boxes (triangular) in Center-Post version are also used as light boxes in the electronic no-frost refrigerators. The Center-Post boxes (038970) are interchangeable with the previous ones only if complete with the mock knob (038969) having two diametrically opposed hook teeth on the outer edge. The box and the mock knob of the old and new version are not interchangeable individually with each other. The old box (023295) and the corresponding mock knob (026612) with hook teeth on the center pin will be used until stock runs out.

### 0513224: CLOGGING OF DRAIN HOLE ON NO-FROST FRIDGE

---

When on no-frost refrigerators at the end of a freezer defrost the ice clogs the drain hole or ducting, do as follows:

- Check that the 20-W drip heating element is well glued and operative, otherwise replace it.
- With a hair-dryer remove ice residue and check that the water flows down through the drain hole and to the compressor tray.
- Insert the aluminium rod (039719) in the hole, the bent end resting on the lowest element of the armoured heating element (60-72 W) mounted on the freezer evaporator.

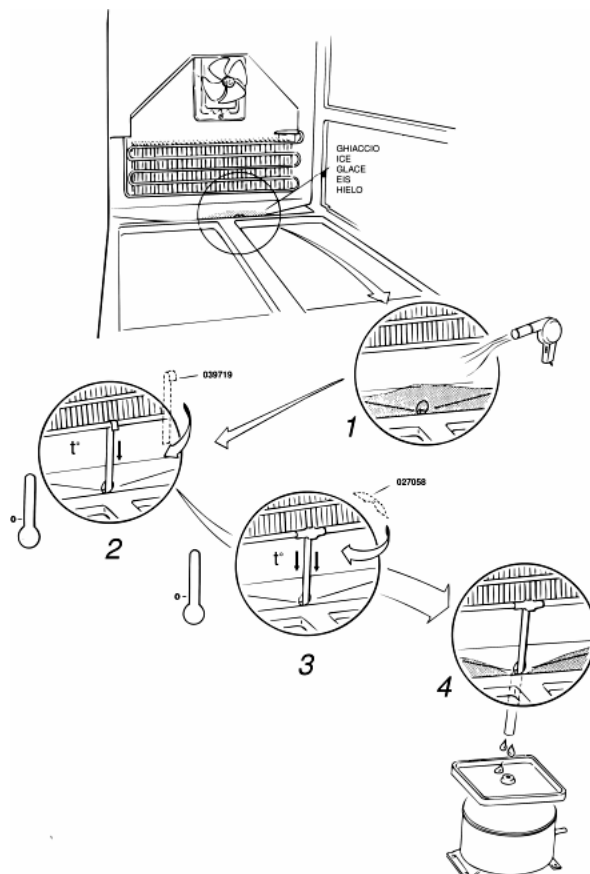
If the height of the evaporator is less than 9 cm compared to the drip hole, shorten the rod about 3 cm. To improve distribution of heat inside the drain hole, block the rod on the armoured heating element with a piece of aluminium tape (027058). The aluminium rod, code (039719), will be equipped with a drawing to explain assembly.

fig.5131539A  
A ICE

### 0513231: NEW REFRIGERATING LIQUID (EUTETTICO) FOR NO-FROST FRIDGE

---

As from the March-93 production the freezer separator 026598 with eutectic-holder tray on no-frost refrigerators has been modified for use with the new eutectic packet.



The depth of the tray has been increased from 36 - 40 mm.

The new eutectic packet, which will be used from April, has a liquid with a different composition which does not contain methylene blue and a new system for the container and the radiating surface, which are no longer sealed together.

The eutectic container which consists of a single hot sealed packet, is fixed to the radiating surface with four 6,3 x 13 mm stainless steel screws.

The new eutectic packet will have the same sat code 026593 as the previous part; it may be mounted on premodification products provided the freezer separator is replaced.

## 0513252: KIT FOR FAN MOTOR WITH PART NO. 042301 (SAT)

As from July-94, Kit 042301 for the 220-240 Volt 50-60 Hz electric fan unit, is supplied as a spare part. This should be used for recessed and free standing appliances with bad performance in the refrigerator compartment and thermostats whose cycles do not run, even when set to minimum.

Naturally, the problem is not caused by the discharge circuit, but by unstable operating conditions with a high room temperatures. The electric fan should be mounted on the compressor cross-piece or on the plastic base (94-range), as shown in the drawing provided with the kit.

It is important to place the fan in an "open" position because air must be drawn from the interior and discharged to the exterior through the condenser flue.

### Important

The fan should never be positioned facing the terminal board of the compressor, because it would cool the klixon and prevent this from operating correctly.

Before returning the appliance into its original position, check that the fan turns freely, removing obstacles such as cables, pipes or capillaries.

The electric connection of the electric fan should be made on the terminal board of the compressor, using the contact of the black wire (thermostat return) and the contact of the blue wire (neutral).

The following kit components are also available as individual spare parts:

---032385 - fan motor support  
---025215 - fan motor rubber part  
---025218 - motor fan (MES)  
---032384 - fan motor DX (MES)

## 0513253: NEW HINGES FOR 3-DOOR FRIDGE (SMALL TOOTH)

---

As from the January-95 production, a new bottom hinge will be mounted on all 550 and 600 mm 3-door refrigerators; the new hinge differs from the previous in that it has a tooth at the back.

This tooth fixes the hinge into the 6 mm hole on the fascia of the refrigerator separator in order to keep the door constantly aligned. The new hinge will be supplied under the same sat codes as the previous part (022155-022011-029076); when using the new hinge on the pre modification models, it will be necessary to eliminate the back tooth or drill a hole in the fascia of the separator at the same level as the tooth. The tip must enter for a depth of at least 5 mm in order to pass through the refrigerator separator.

## 0513254: NEW SEPARATOR PLATE FOR 3-DOOR FRIDGE

---

As from the January-95 production run, all three-door 550 and 600 mm refrigerator models have a new refrigerator separator which has a different front panel with different fixing holes on the separator plate (opposite the centre hinge) with respect to the previous one.

The distance between the fixing holes on the plate has been increased from 30 to 46 mm in order to distribute the weight of the separator better.

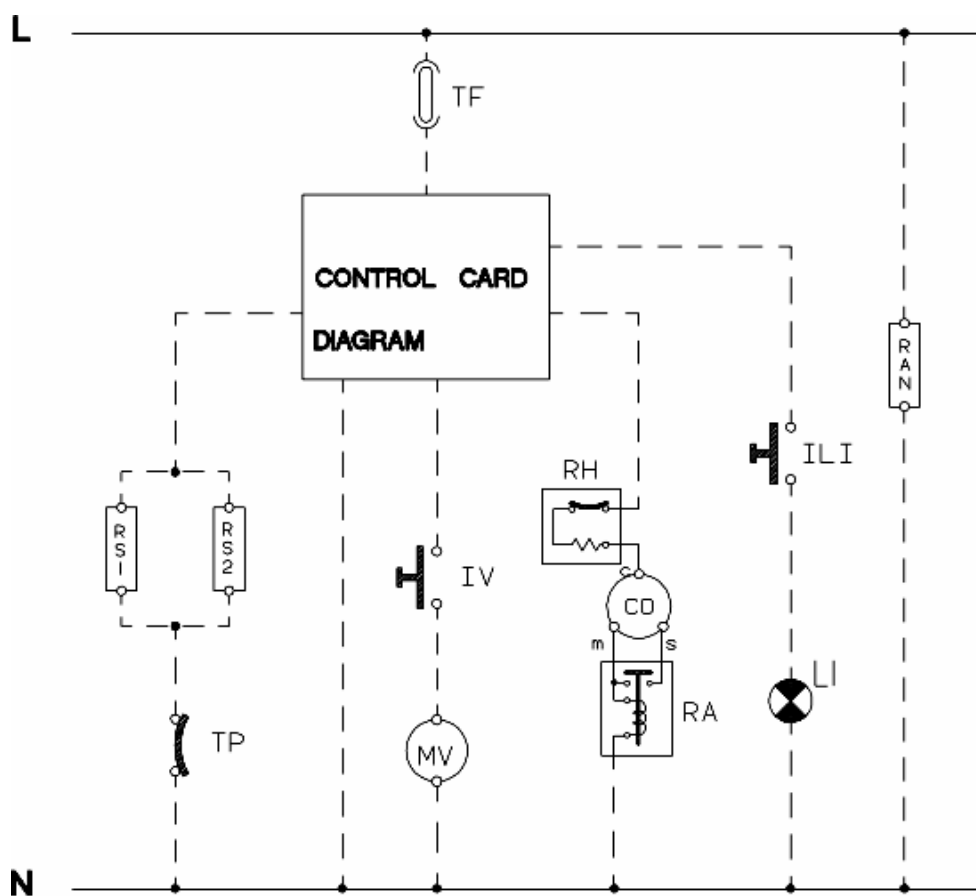
The cover of the separator (022012-024301) will be supplied with the 6 mm on both sides.

The new fixing plate with painted, chromed and zama finish will be supplied under the following codes (047948-047949-046235) which replace the previous codes (022013-022156-029077).

The new refrigerator separator will continue to be supplied under previous sat code (030228-024273) complete with the new parts (cover - centre hinge - fixing plate). It may also be mounted on premodification models.

Electric schemes and links

Cod. 513008b



LEGEND

--- WIRING      ——— INTERNAL CONNECTION

## Legend

Legend: 513008b

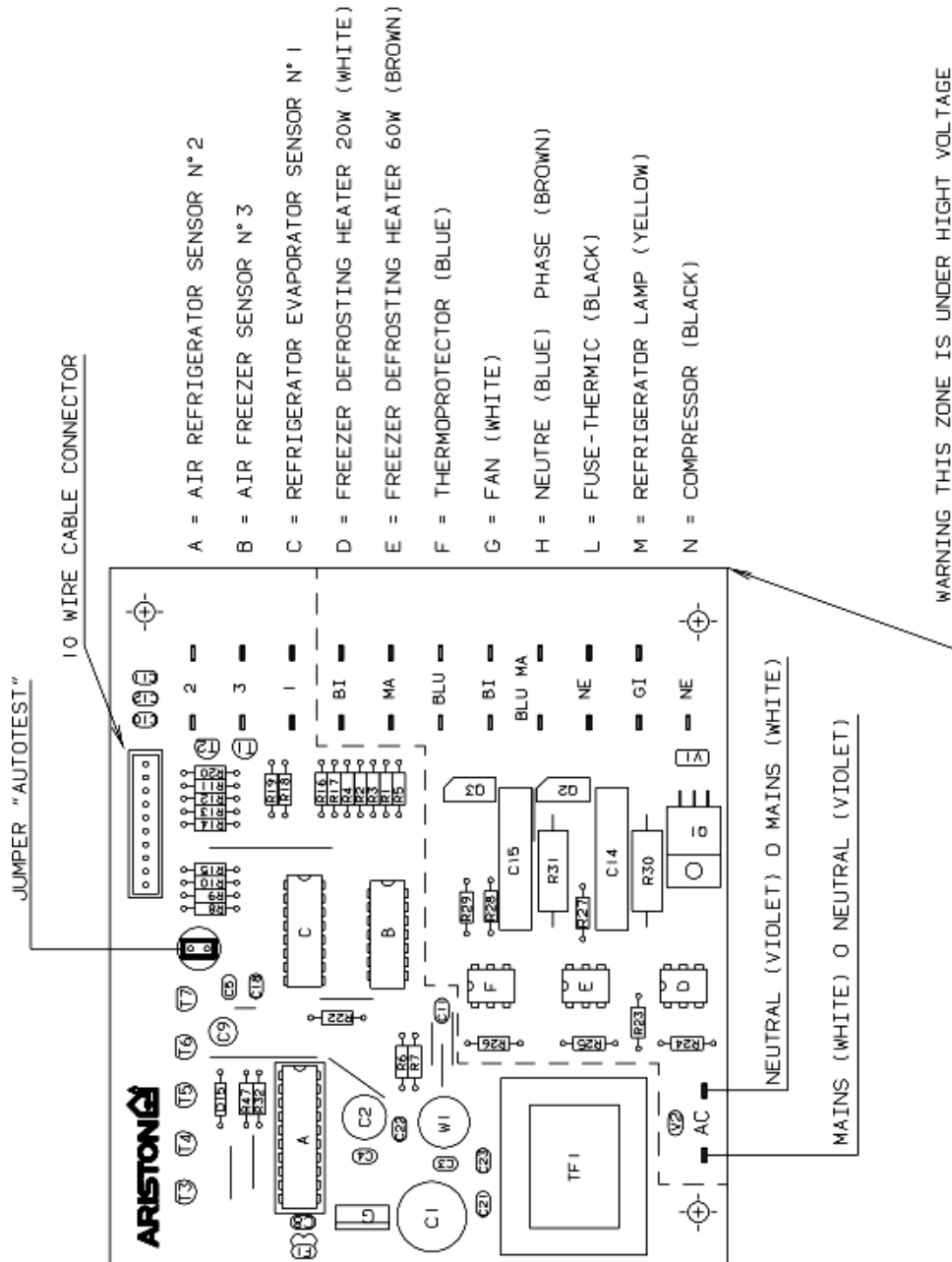
CM	Running capacitor	N	Neutral
CO	Compressor	PTC	PTC relay
FA	Radio anti-trouble filter	R	Heating resistance
IDS	Schackler with warning	RA	Ammetrical relay
ILFR	Push-button for fridge lamp/fan	RAN	Heating element condensation
ILFZ	Push-button for freezer lamp/fan	RFZ	Heating element condensation freezer
ILI	Lamp switch	RH	Thermal relay
IP	Door switch	RS	Defrosting resistance
IR	Line switch	RS1	Defrosting resistance no-frost evaporator
ISC	Warning light-freezing switch	RS2	Defrosting resistance no-frost gutter
IV	Fan-motor switch	SDC	CONTROL CARD DIAGRAM
L	Line	SL	Line warning
LFR	Fridge lamp	SND1	PROBE REFRIGERATOR EVAP.
LFZ	Freezer lamp	SND2	AIR-PROBE FREEZER
LI	Lighting lamp	SND3	AIR-PROBE REFRIGERATOR
M	Mass/Eart symbol	T	Erden
MO	Terminal board	TC	Turbocooling
MT	Timer motor	TF	Fuse-thermic
MV	Fan motor	THI	Thermostat switch
MVCO	Compressor compartment fan	THR	Adjustable thermostat
BZ	Audio freezer alarm	R	Heating resistance
C	Surge Capacitor	RA	Ammetrical relay
CM	Running capacitor	RAN	Heating element condensation
CO	Compressor	RFZ	Heating element condensation freezer
EV	Electrovalve	RH	Thermal relay
FA	Radio anti-trouble filter	RS	Defrosting resistance
IDS	Schackler with warning	RS1	No frost evaporator resistance
IEC	ON OFF loads switch	RS2	No frost drip pan resistance
IEFR	ON OFF refrigerator switch	RS3	Defrosting resistance
IETH	Thermostat exclusion	RS4	Defrosting resistance
ILFR	Push-button for fridge lamp/fan	RTA	Thermo actuator defrosting resistance
ILFZ	Push-button for freezer lamp/fan	SA	Allarm warning
ILI	Lamp switch	SC	Freezing warning

IP	Door switch	SDC	CONTROL CARD DIAGRAM
IR	Line switch	SL	Line warning
ISC	Warning light-freezing switch	SND1	SONDE VERDAMPFER KUEHLSCHRANK
IV	Fan-motor switch	SND2	SONDELUFTE FREEZER
IVFZ	Freezer fan-motor switch	SND3	AIR-PROBE REFRIGERATOR
L	Line	SND4	Sonda evaporator freezer
LFR	Fridge lamp	SND5	SONDA ARIA FREEZER VANO
LFZ	Freezer lamp	T	Erden
LI	Lighting lamp	TA1	Open thermo actuator
M	Mass/Eart symbol	TA2	Closed thermo actuator
MO	Terminal board	TC	Turbocooling
MT	Timer motor	TF	Fuse-thermic
MV	Fan motor	THA	Allarm thermostat
MVC	Compressor fan motor	THC	Freezer thermostat
MVCO	Compressor compartment fan	THDF	Refrigerator shackler thermostat
MVFR	Fan motor fridge	THI	Thermostat switch
MVFZ	Fan motor freezer	THR	Adjustable thermostat
N	Neutral	TP	Thermoprotector
PTC	PTC relay	TR	Transformer
AQS	Aquastop electrovalve	Mzbn/MTA	zbn timer motor
B	Buzzer	N	Neutral or Terminal Board
BC	Blocco Cesto	NC	Spin cycle exclusion
BF	Terminal board contact, motor fan and dryer	P	Pressure switch
BP	Buzzer	P1	1st level pressure cut-off switch
C	Condensator	P2	2nd level pressure cut-off switch
CA	Condensator	PA	High speed potentiometer
DV	Switching device	PB	Low speed potentiometer
EF/CL	Electro-Valve Cold Water / Bleach	PL	Pure Wool
EF/L	Electro-Valve Cold Water / Wash	PM	Motor Thermoprotector
EF/P	Electro-Valve Cold Water / Prewash	PR	Timer programmer or Pressure switch
ER	Exclude Heating Element	PS	Drain pump
ET	Thermostat disactivation	R	Heating element
EV	Electrovalve	RE	Relay
EVA	Dryer electrovalve	RR	Heating element
EVC	Hot water electrovalve	RV	Speed regulator
EVF	Elettrovalvola acqua fredda	Ras/RA	Dryer heating element
EVL	Wash electrovalve	S	LED
EVP	Pre Wash electrovalve	SL	Line LED
FA	Antijamming filter	SO	Door LED
FD	Delicate drying cycle thermostat	SR	Heating LED
FE	Strong drying cycle thermostat	ST	Temperature selector
FRT	Thermofusible Heating Element	SV	Speed Selector for Spin
I	Inverter	T	Timer contacts
II...2..3..	Switches/switching devices	TA	Drying timer contacts
IA	Switch On/Off	TB	Low Temperature Thermostat
IC	Switch N.C. - 1/2 Load	TC	Spider wheel earth
ID	Switch display	TFL	Flange earth
IE	Water Saving Device	TG	Main earth

IF	Switch - Spin Reduction	TH	Thermostat
IP	Door switch	TH1	1st temperature thermostat
IR	Line switch	TH2	2nd temperature thermostat
IS	Water-stop	TH3	3rd temperature thermostat
L	Line or Lamp	THF	Operating thermostat
LB	Low Level	THR	Adjustable thermostat
LN	Normal Level	TM	Motor earth
LS	Pilot lamp	TMB	Main cabinet earth
M	Earth-symbol	TMP	Motor thermal protector
MC	Spin cycle motor	TMS	Thermostop
MI	MOTOR WITH PULLEY	TP	Thermal protector
ML	Wash cycle motor	TPS	Drain pump earth
MO	Terminal Board	TR	Heating element earth
MP	Door dip-switch	TS	Safety thermostat
MR	Thermal Lock	TT	Timer earthing connection
MT	Timer motor	TTH	Earthing Thermostat
MV	Motor fan	TV	Tank earth
MV -Ras	Dryer heating element	ZBN	Timer

Cod. 513009b

Electric schemes and links



## Legend

Legend: 513009b

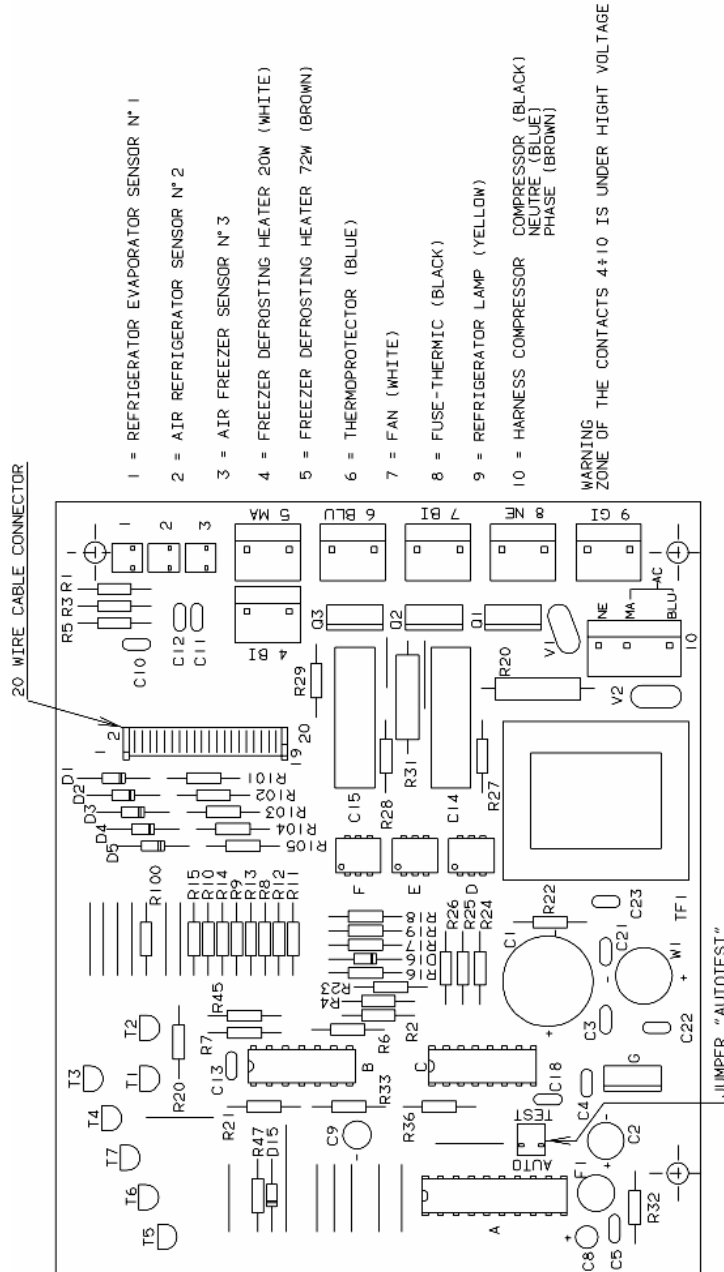
CM	Running capacitor	N	Neutral
CO	Compressor	PTC	PTC relay
FA	Radio anti-trouble filter	R	Heating resistance
IDS	Schackler with warning	RA	Ammetrical relay
ILFR	Push-button for fridge lamp/fan	RAN	Heating element condensation
ILFZ	Push-button for freezer lamp/fan	RFZ	Heating element condensation freezer
ILI	Lamp switch	RH	Thermal relay
IP	Door switch	RS	Defrosting resistance
IR	Line switch	RS1	Defrosting resistance no-frost evaporator
ISC	Warning light-freezing switch	RS2	Defrosting resistance no-frost gutter
IV	Fan-motor switch	SDC	CONTROL CARD DIAGRAM
L	Line	SL	Line warning
LFR	Fridge lamp	SND1	PROBE REFRIGERATOR EVAP.
LFZ	Freezer lamp	SND2	AIR-PROBE FREEZER
LI	Lighting lamp	SND3	AIR-PROBE REFRIGERATOR
M	Mass/Eart symbol	T	Erden
MO	Terminal board	TC	Turbocooling
MT	Timer motor	TF	Fuse-thermic
MV	Fan motor	THI	Thermostat switch
MVCO	Compressor compartment fan	THR	Adjustable thermostat
BZ	Audio freezer alarm	R	Heating resistance
C	Surge Capacitor	RA	Ammetrical relay
CM	Running capacitor	RAN	Heating element condensation
CO	Compressor	RFZ	Heating element condensation freezer
EV	Electrovalve	RH	Thermal relay
FA	Radio anti-trouble filter	RS	Defrosting resistance
IDS	Schackler with warning	RS1	No frost evaporator resistance
IEC	ON OFF loads switch	RS2	No frost drip pan resistance
IEFR	ON OFF refrigerator switch	RS3	Defrosting resistance
IETH	Thermostat exclusion	RS4	Defrosting resistance
ILFR	Push-button for fridge lamp/fan	RTA	Thermo actuator defrosting resistance
ILFZ	Push-button for freezer lamp/fan	SA	Allarm warning
ILI	Lamp switch	SC	Freezing warning

IP	Door switch	SDC	CONTROL CARD DIAGRAM
IR	Line switch	SL	Line warning
ISC	Warning light-freezing switch	SND1	SONDE VERDAMPFER KUEHLSCHRANK
IV	Fan-motor switch	SND2	SONDELUFTE FREEZER
IVFZ	Freezer fan-motor switch	SND3	AIR-PROBE REFRIGERATOR
L	Line	SND4	Sonda evaporator freezer
LFR	Fridge lamp	SND5	SONDA ARIA FREEZER VANO
LFZ	Freezer lamp	T	Erden
LI	Lighting lamp	TA1	Open thermo actuator
M	Mass/Eart symbol	TA2	Closed thermo actuator
MO	Terminal board	TC	Turbocooling
MT	Timer motor	TF	Fuse-thermic
MV	Fan motor	THA	Allarm thermostat
MVC	Compressor fan motor	THC	Freezer thermostat
MVCO	Compressor compartment fan	THDF	Refrigerator shackler thermostat
MVFR	Fan motor fridge	THI	Thermostat switch
MVFZ	Fan motor freezer	THR	Adjustable thermostat
N	Neutral	TP	Thermoprotector
PTC	PTC relay	TR	Transformer
AQS	Aquastop electrovalve	Mzbn/MTA	zbn timer motor
B	Buzzer	N	Neutral or Terminal Board
BC	Blocco Cesto	NC	Spin cycle exclusion
BF	Terminal board contact, motor fan and dryer	P	Pressure switch
BP	Buzzer	P1	1st level pressure cut-off switch
C	Condensator	P2	2nd level pressure cut-off switch
CA	Condensator	PA	High speed potentiometer
DV	Switching device	PB	Low speed potentiometer
EF/CL	Electro-Valve Cold Water / Bleach	PL	Pure Wool
EF/L	Electro-Valve Cold Water / Wash	PM	Motor Thermoprotector
EF/P	Electro-Valve Cold Water / Prewash	PR	Timer programmer or Pressure switch
ER	Exclude Heating Element	PS	Drain pump
ET	Thermostat disactivation	R	Heating element
EV	Electrovalve	RE	Relay
EVA	Dryer electrovalve	RR	Heating element
EVC	Hot water electrovalve	RV	Speed regulator
EVF	Elettrovalvola acqua fredda	Ras/RA	Dryer heating element
EVL	Wash electrovalve	S	LED
EVP	Pre Wash electrovalve	SL	Line LED
FA	Antijamming filter	SO	Door LED
FD	Delicate drying cycle thermostat	SR	Heating LED
FE	Strong drying cycle thermostat	ST	Temperature selector
FRT	Thermofusible Heating Element	SV	Speed Selector for Spin
I	Inverter	T	Timer contacts
II...2..3..	Switches/switching devices	TA	Drying timer contacts
IA	Switch On/Off	TB	Low Temperature Thermostat
IC	Switch N.C. - 1/2 Load	TC	Spider wheel earth
ID	Switch display	TFL	Flange earth
IE	Water Saving Device	TG	Main earth

IF	Switch - Spin Reduction	TH	Thermostat
IP	Door switch	TH1	1st temperature thermostat
IR	Line switch	TH2	2nd temperature thermostat
IS	Water-stop	TH3	3rd temperature thermostat
L	Line or Lamp	THF	Operating thermostat
LB	Low Level	THR	Adjustable thermostat
LN	Normal Level	TM	Motor earth
LS	Pilot lamp	TMB	Main cabinet earth
M	Earth-symbol	TMP	Motor thermal protector
MC	Spin cycle motor	TMS	Thermostop
MI	MOTOR WITH PULLEY	TP	Thermal protector
ML	Wash cycle motor	TPS	Drain pump earth
MO	Terminal Board	TR	Heating element earth
MP	Door dip-switch	TS	Safety thermostat
MR	Thermal Lock	TT	Timer earthing connection
MT	Timer motor	TTH	Earthing Thermostat
MV	Motor fan	TV	Tank earth
MV -Ras	Dryer heating element	ZBN	Timer

Cod. 513017b

Electric schemes and links



## Legend

Legend: 513017b

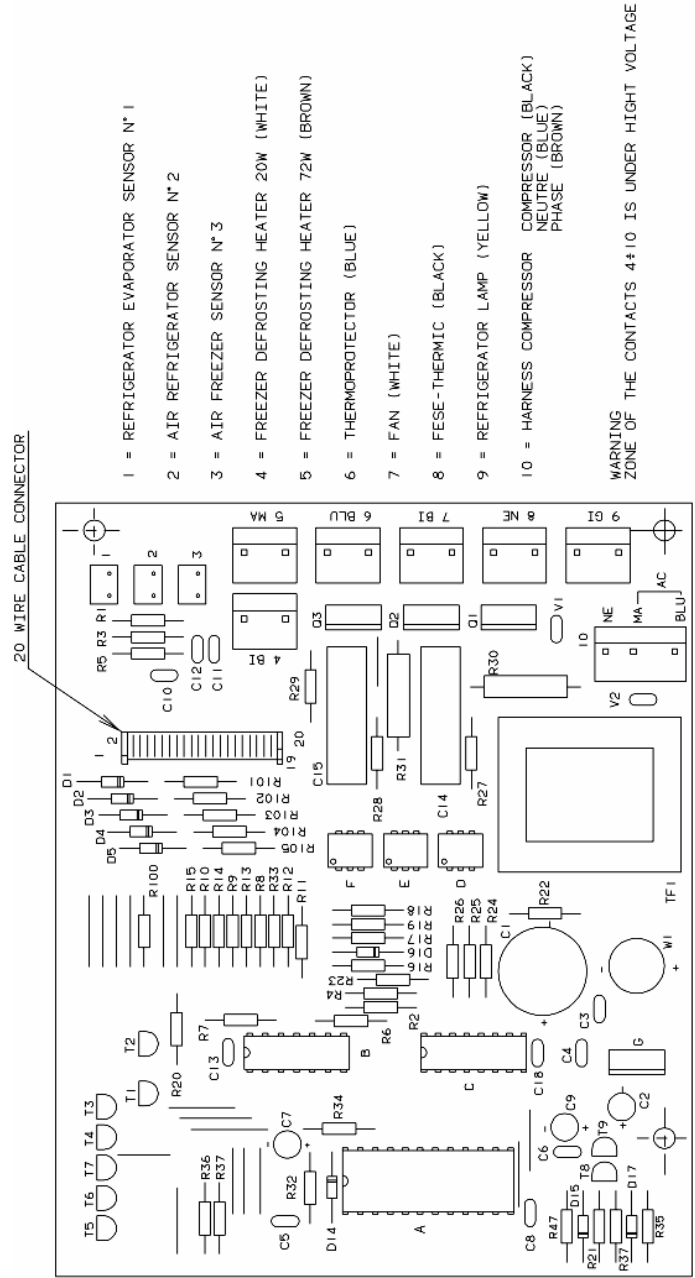
CM	Running capacitor	N	Neutral
CO	Compressor	PTC	PTC relay
FA	Radio anti-trouble filter	R	Heating resistance
IDS	Schackler with warning	RA	Ammetrical relay
ILFR	Push-button for fridge lamp/fan	RAN	Heating element condensation
ILFZ	Push-button for freezer lamp/fan	RFZ	Heating element condensation freezer
ILI	Lamp switch	RH	Thermal relay
IP	Door switch	RS	Defrosting resistance
IR	Line switch	RS1	Defrosting resistance no-frost evaporator
ISC	Warning light-freezing switch	RS2	Defrosting resistance no-frost gutter
IV	Fan-motor switch	SDC	CONTROL CARD DIAGRAM
L	Line	SL	Line warning
LFR	Fridge lamp	SND1	PROBE REFRIGERATOR EVAP.
LFZ	Freezer lamp	SND2	AIR-PROBE FREEZER
LI	Lighting lamp	SND3	AIR-PROBE REFRIGERATOR
M	Mass/Eart symbol	T	Erden
MO	Terminal board	TC	Turbocooling
MT	Timer motor	TF	Fuse-thermic
MV	Fan motor	THI	Thermostat switch
MVCO	Compressor compartment fan	THR	Adjustable thermostat
BZ	Audio freezer alarm	R	Heating resistance
C	Surge Capacitor	RA	Ammetrical relay
CM	Running capacitor	RAN	Heating element condensation
CO	Compressor	RFZ	Heating element condensation freezer
EV	Electrovalve	RH	Thermal relay
FA	Radio anti-trouble filter	RS	Defrosting resistance
IDS	Schackler with warning	RS1	No frost evaporator resistance
IEC	ON OFF loads switch	RS2	No frost drip pan resistance
IEFR	ON OFF refrigerator switch	RS3	Defrosting resistance
IETH	Thermostat exclusion	RS4	Defrosting resistance
ILFR	Push-button for fridge lamp/fan	RTA	Thermo actuator defrosting resistance
ILFZ	Push-button for freezer lamp/fan	SA	Allarm warning
ILI	Lamp switch	SC	Freezing warning

IP	Door switch	SDC	CONTROL CARD DIAGRAM
IR	Line switch	SL	Line warning
ISC	Warning light-freezing switch	SND1	SONDE VERDAMPFER KUEHLSCHRANK
IV	Fan-motor switch	SND2	SONDELUFTE FREEZER
IVFZ	Freezer fan-motor switch	SND3	AIR-PROBE REFRIGERATOR
L	Line	SND4	Sonda evaporator freezer
LFR	Fridge lamp	SND5	SONDA ARIA FREEZER VANO
LFZ	Freezer lamp	T	Erden
LI	Lighting lamp	TA1	Open thermo actuator
M	Mass/Eart symbol	TA2	Closed thermo actuator
MO	Terminal board	TC	Turbocooling
MT	Timer motor	TF	Fuse-thermic
MV	Fan motor	THA	Allarm thermostat
MVC	Compressor fan motor	THC	Freezer thermostat
MVCO	Compressor compartment fan	THDF	Refrigerator shackler thermostat
MVFR	Fan motor fridge	THI	Thermostat switch
MVFZ	Fan motor freezer	THR	Adjustable thermostat
N	Neutral	TP	Thermoprotector
PTC	PTC relay	TR	Transformer
AQS	Aquastop electrovalve	Mzbn/MTA	zbn timer motor
B	Buzzer	N	Neutral or Terminal Board
BC	Blocco Cesto	NC	Spin cycle exclusion
BF	Terminal board contact, motor fan and dryer	P	Pressure switch
BP	Buzzer	P1	1st level pressure cut-off switch
C	Condensator	P2	2nd level pressure cut-off switch
CA	Condensator	PA	High speed potentiometer
DV	Switching device	PB	Low speed potentiometer
EF/CL	Electro-Valve Cold Water / Bleach	PL	Pure Wool
EF/L	Electro-Valve Cold Water / Wash	PM	Motor Thermoprotector
EF/P	Electro-Valve Cold Water / Prewash	PR	Timer programmer or Pressure switch
ER	Exclude Heating Element	PS	Drain pump
ET	Thermostat disactivation	R	Heating element
EV	Electrovalve	RE	Relay
EVA	Dryer electrovalve	RR	Heating element
EVC	Hot water electrovalve	RV	Speed regulator
EVF	Elettrovalvola acqua fredda	Ras/RA	Dryer heating element
EVL	Wash electrovalve	S	LED
EVP	Pre Wash electrovalve	SL	Line LED
FA	Antijamming filter	SO	Door LED
FD	Delicate drying cycle thermostat	SR	Heating LED
FE	Strong drying cycle thermostat	ST	Temperature selector
FRT	Thermofusible Heating Element	SV	Speed Selector for Spin
I	Inverter	T	Timer contacts
II...2..3..	Switches/switching devices	TA	Drying timer contacts
IA	Switch On/Off	TB	Low Temperature Thermostat
IC	Switch N.C. - 1/2 Load	TC	Spider wheel earth
ID	Switch display	TFL	Flange earth
IE	Water Saving Device	TG	Main earth

IF	Switch - Spin Reduction	TH	Thermostat
IP	Door switch	TH1	1st temperature thermostat
IR	Line switch	TH2	2nd temperature thermostat
IS	Water-stop	TH3	3rd temperature thermostat
L	Line or Lamp	THF	Operating thermostat
LB	Low Level	THR	Adjustable thermostat
LN	Normal Level	TM	Motor earth
LS	Pilot lamp	TMB	Main cabinet earth
M	Earth-symbol	TMP	Motor thermal protector
MC	Spin cycle motor	TMS	Thermostop
MI	MOTOR WITH PULLEY	TP	Thermal protector
ML	Wash cycle motor	TPS	Drain pump earth
MO	Terminal Board	TR	Heating element earth
MP	Door dip-switch	TS	Safety thermostat
MR	Thermal Lock	TT	Timer earthing connection
MT	Timer motor	TTH	Earthing Thermostat
MV	Motor fan	TV	Tank earth
MV -Ras	Dryer heating element	ZBN	Timer

Cod. 513022b

Electric schemes and links



## Legend

Legend: 513022b

CM	Running capacitor	N	Neutral
CO	Compressor	PTC	PTC relay
FA	Radio anti-trouble filter	R	Heating resistance
IDS	Schackler with warning	RA	Ammetrical relay
ILFR	Push-button for fridge lamp/fan	RAN	Heating element condensation
ILFZ	Push-button for freezer lamp/fan	RFZ	Heating element condensation freezer
ILI	Lamp switch	RH	Thermal relay
IP	Door switch	RS	Defrosting resistance
IR	Line switch	RS1	Defrosting resistance no-frost evaporator
ISC	Warning light-freezing switch	RS2	Defrosting resistance no-frost gutter
IV	Fan-motor switch	SDC	CONTROL CARD DIAGRAM
L	Line	SL	Line warning
LFR	Fridge lamp	SND1	PROBE REFRIGERATOR EVAP.
LFZ	Freezer lamp	SND2	AIR-PROBE FREEZER
LI	Lighting lamp	SND3	AIR-PROBE REFRIGERATOR
M	Mass/Eart symbol	T	Erden
MO	Terminal board	TC	Turbocooling
MT	Timer motor	TF	Fuse-thermic
MV	Fan motor	THI	Thermostat switch
MVCO	Compressor compartment fan	THR	Adjustable thermostat
BZ	Audio freezer alarm	R	Heating resistance
C	Surge Capacitor	RA	Ammetrical relay
CM	Running capacitor	RAN	Heating element condensation
CO	Compressor	RFZ	Heating element condensation freezer
EV	Electrovalve	RH	Thermal relay
FA	Radio anti-trouble filter	RS	Defrosting resistance
IDS	Schackler with warning	RS1	No frost evaporator resistance
IEC	ON OFF loads switch	RS2	No frost drip pan resistance
IEFR	ON OFF refrigerator switch	RS3	Defrosting resistance
IETH	Thermostat exclusion	RS4	Defrosting resistance
ILFR	Push-button for fridge lamp/fan	RTA	Thermo actuator defrosting resistance
ILFZ	Push-button for freezer lamp/fan	SA	Allarm warning
ILI	Lamp switch	SC	Freezing warning

IP	Door switch	SDC	CONTROL CARD DIAGRAM
IR	Line switch	SL	Line warning
ISC	Warning light-freezing switch	SND1	SONDE VERDAMPFER KUEHLSCHRANK
IV	Fan-motor switch	SND2	SONDELUFTE FREEZER
IVFZ	Freezer fan-motor switch	SND3	AIR-PROBE REFRIGERATOR
L	Line	SND4	Sonda evaporator freezer
LFR	Fridge lamp	SND5	SONDA ARIA FREEZER VANO
LFZ	Freezer lamp	T	Erden
LI	Lighting lamp	TA1	Open thermo actuator
M	Mass/Eart symbol	TA2	Closed thermo actuator
MO	Terminal board	TC	Turbocooling
MT	Timer motor	TF	Fuse-thermic
MV	Fan motor	THA	Allarm thermostat
MVC	Compressor fan motor	THC	Freezer thermostat
MVCO	Compressor compartment fan	THDF	Refrigerator shackler thermostat
MVFR	Fan motor fridge	THI	Thermostat switch
MVFZ	Fan motor freezer	THR	Adjustable thermostat
N	Neutral	TP	Thermoprotector
PTC	PTC relay	TR	Transformer
AQS	Aquastop electrovalve	Mzbn/MTA	zbn timer motor
B	Buzzer	N	Neutral or Terminal Board
BC	Blocco Cesto	NC	Spin cycle exclusion
BF	Terminal board contact, motor fan and dryer	P	Pressure switch
BP	Buzzer	P1	1st level pressure cut-off switch
C	Condensator	P2	2nd level pressure cut-off switch
CA	Condensator	PA	High speed potentiometer
DV	Switching device	PB	Low speed potentiometer
EF/CL	Electro-Valve Cold Water / Bleach	PL	Pure Wool
EF/L	Electro-Valve Cold Water / Wash	PM	Motor Thermoprotector
EF/P	Electro-Valve Cold Water / Prewash	PR	Timer programmer or Pressure switch
ER	Exclude Heating Element	PS	Drain pump
ET	Thermostat disactivation	R	Heating element
EV	Electrovalve	RE	Relay
EVA	Dryer electrovalve	RR	Heating element
EVC	Hot water electrovalve	RV	Speed regulator
EVF	Elettrovalvola acqua fredda	Ras/RA	Dryer heating element
EVL	Wash electrovalve	S	LED
EVP	Pre Wash electrovalve	SL	Line LED
FA	Antijamming filter	SO	Door LED
FD	Delicate drying cycle thermostat	SR	Heating LED
FE	Strong drying cycle thermostat	ST	Temperature selector
FRT	Thermofusible Heating Element	SV	Speed Selector for Spin
I	Inverter	T	Timer contacts
II...2..3..	Switches/switching devices	TA	Drying timer contacts
IA	Switch On/Off	TB	Low Temperature Thermostat
IC	Switch N.C. - 1/2 Load	TC	Spider wheel earth
ID	Switch display	TFL	Flange earth
IE	Water Saving Device	TG	Main earth

IF	Switch - Spin Reduction	TH	Thermostat
IP	Door switch	TH1	1st temperature thermostat
IR	Line switch	TH2	2nd temperature thermostat
IS	Water-stop	TH3	3rd temperature thermostat
L	Line or Lamp	THF	Operating thermostat
LB	Low Level	THR	Adjustable thermostat
LN	Normal Level	TM	Motor earth
LS	Pilot lamp	TMB	Main cabinet earth
M	Earth-symbol	TMP	Motor thermal protector
MC	Spin cycle motor	TMS	Thermostop
MI	MOTOR WITH PULLEY	TP	Thermal protector
ML	Wash cycle motor	TPS	Drain pump earth
MO	Terminal Board	TR	Heating element earth
MP	Door dip-switch	TS	Safety thermostat
MR	Thermal Lock	TT	Timer earthing connection
MT	Timer motor	TTH	Earthing Thermostat
MV	Motor fan	TV	Tank earth
MV -Ras	Dryer heating element	ZBN	Timer