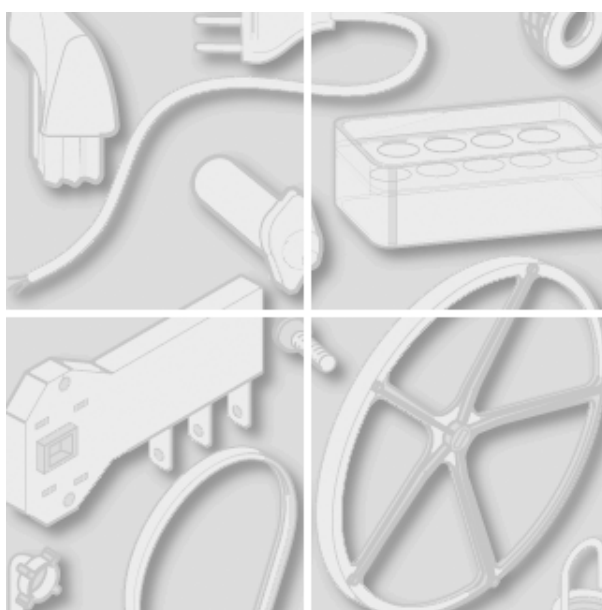


Indesit Company



Model type:

AD12EU

Commercial code:

15862

General notes

Technical Documentation guidelines

You can find herewith some generic information to simplify consulting of technical documentation:

1. Models of same range share the same exploded views, which report the richest set of spare parts:generally, a model does not necessarily have a related spare part for each particular shown on exploded views.
2. Some spare parts can not be represented directly on the exploded views (instruction booklets, specific kit, etc...). You can find those codes in the spare parts list with the same reference of particular where spares are installed or with references 099, 999. Instruction booklets, once managed, appear with 000 reference.
3. On the higher right site of each exploded view there is a serial number which indicates the beginning of the production of certain range:some models might have more than an exploded view for a given category, each distinguished by a different serial no.and linked to another spare parts list, In this case, serial no. is required to supply the right spare part code. Exploded view to be considered is the one with a more recent serial no. but previous than the one of the model that needs assistance.
- 4.Exploded views might require further updates even after publishing. Addition of new spares will go on following the already existing numeration references. Revision number of an exploded view is shown into last four digits of serial number into upper right hand corner.
- 5.The spare parts list associated to an exploded view shows related codes of spares managed for a certain model; for each spare part other informations are available:

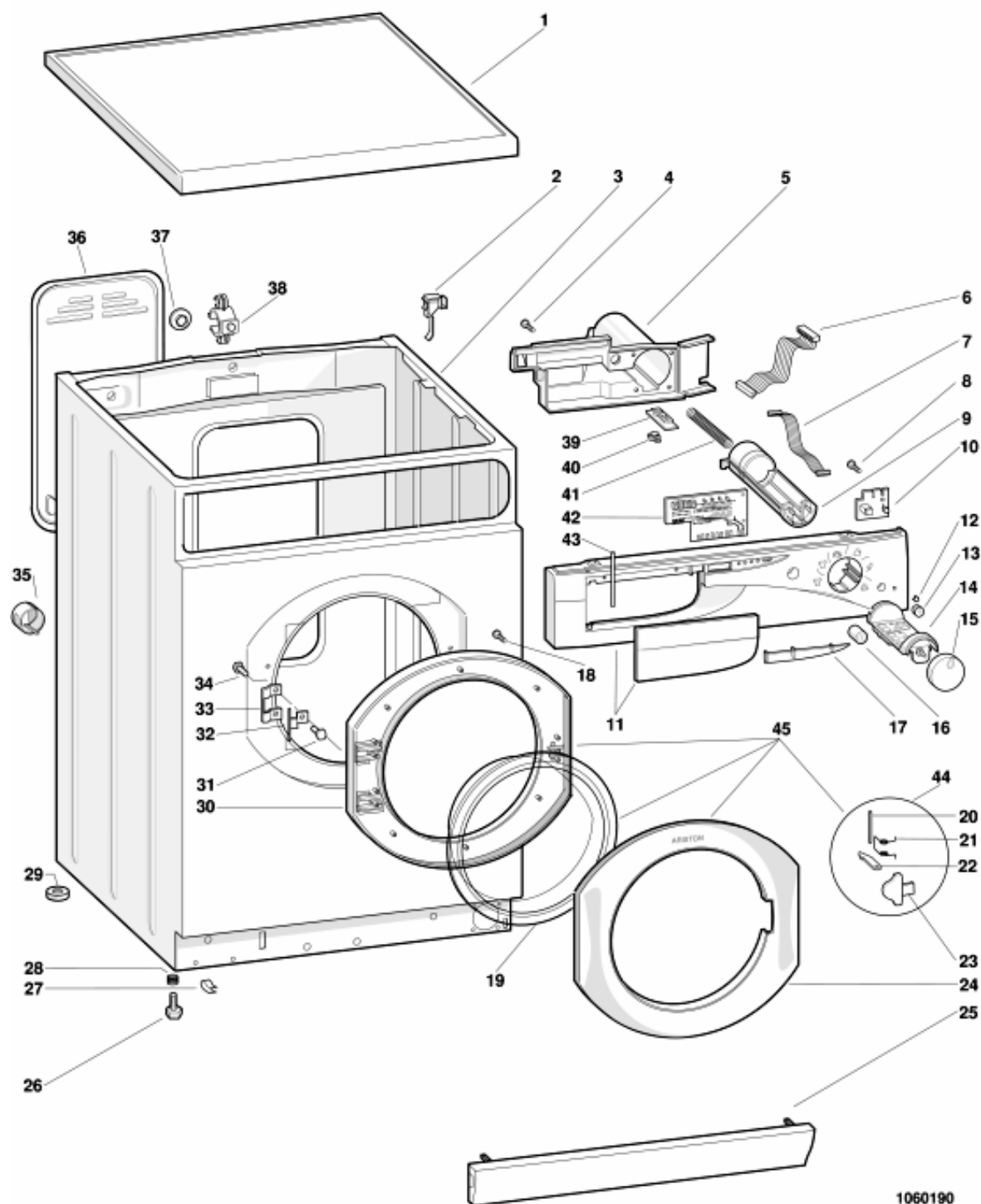
REF: reference no of spare into a table; SUBSTITUTE: list of spare(s) which can replace a code but that keeps same functional characteristics

INDUSTRIAL CODE: list of variables of a model (shown into model label) where such spare is used; NOTICE: code of information(s) to refer to complete technical intervention, track for changes or to find correct spare part code.
6. Some notices, into a same section are generic therefore cannot be directly linked to a spare part. In order to assist a model in the best way as possible, it is helpful to pay attention to all notices and constantly verify documentation updates
- 7.Technical documentation cover shows model name and its commercial codes

1060190

Exploded views

Matr. 51218.0002



1060190

Spare parts list

Ref.	Code	C cep.№	По	Substitute	Description	Notice	Industrial
000	C00051111				dialogic remote control		
000	C00054784				user istructions booklet turco		
000	C00054785				quick-reference dialogic turco		
000	C00056982				instruction booklet dialogic gb-d-		
000	C00056983				quick-reference dialogic fr		
000	C00056984				quick-reference dialogic de		
000	C00056985				quick-reference dialogic nl		
000	C00056986				quick-reference dialogic gb		
000	C00056987				quick-reference dialogic russo		
001	C00046139				верхняя панель, белая 27		
001	C00061931			1 x C00046139	top - white (shiny) 544mm x	n1040015	
002	C00024552				держатель труб		
003	C00048289				комплект шкафа dialogic белый	0106552	
004	C00048301				bolt hi-lo 5x13		
005	C00048300				коробка управления dialogic		
006	C00048310				проводка dialogic		
007	C00048315				проводка для кнопочной		
008	C00012717				самонарезной винт 2,9x9,52 tcb		
009	C00048313				съемная опора dialogic		
010	C00048312				плата запуска программы		
011	C00051119				панель управления + ручка	n1040047	
012	C00048294				колпачок для лампочки		
013	C00048299				клавиша сброса b27		
014	C00051116				комплект держателя и		
015	C00048316				ручка выбора программ dialogic		
016	C00048291				клавиша "вкл/выкл" b27		
017	C00048296				пластинка с обознач. для		
018	C00012687				винт самонарезающийся hi-lo		
019	C00019671				стекло люка (30513)	0106541	
019	C00028304				стекло смотр.окна (80107)	0106541	
020	C00003044				штырь рукоятки		
021	C00043668				finger spring-door handle		
022	C00019705			1 x C00021300	striker - door catch		
023	C00046135				ручка люка белая 27		
024	C00046138				door frame outer-white 27		

1060190

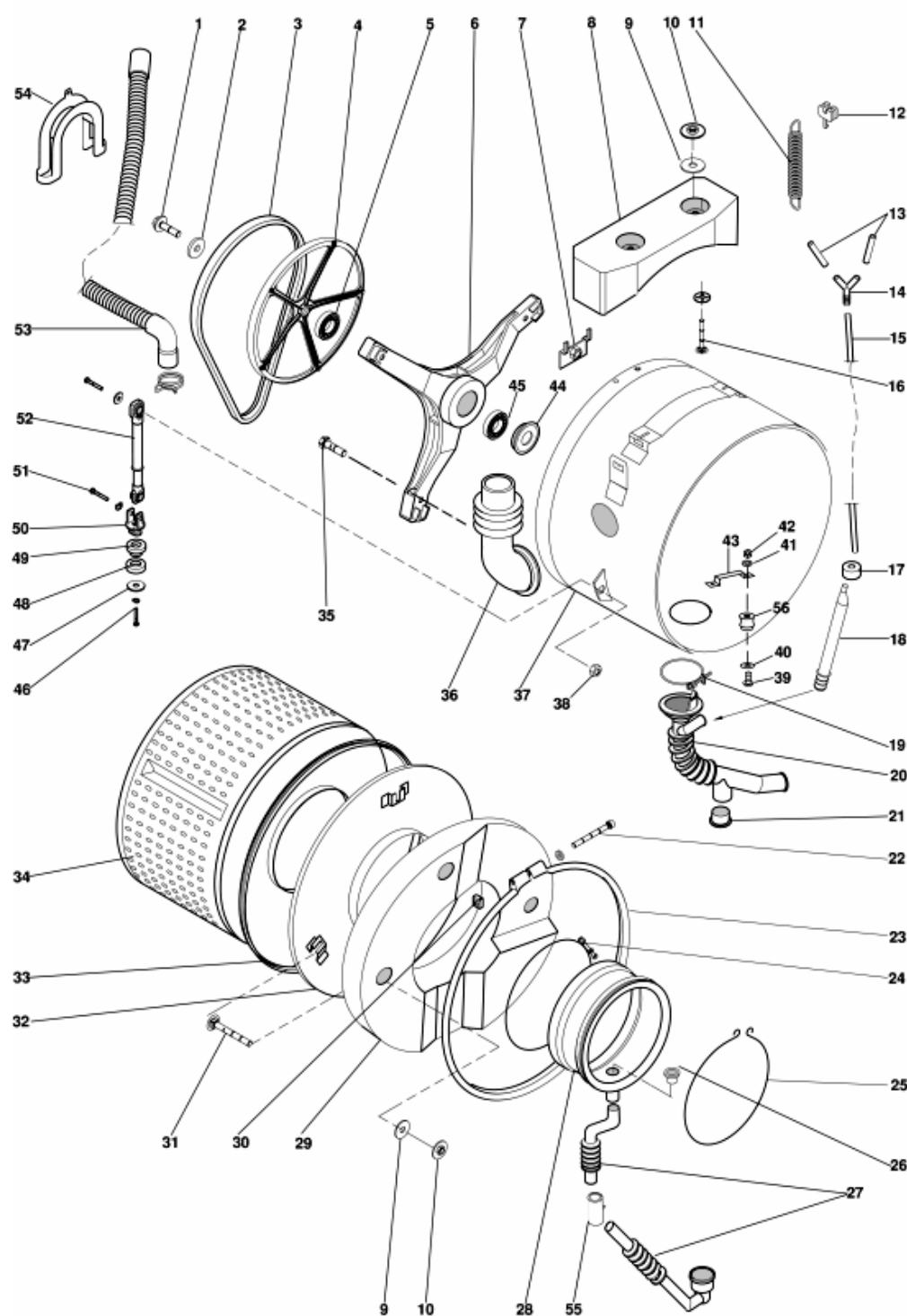
Spare parts list

Ref.	Code	C cep.№	По	Substitute	Description	Notice	Industrial
025	C00046125				цоколь белый 27		
026	C00046122			1 x C00036019 1 x C00056928	ножка в сборе m 10		
027	C00044819				clip		
028	C00046121				пружина ножки		
029	C00046119				ножка		
030	C00046137				inner door frame white		
031	C00043019			1 x C00074149	taptite screw m4x6testfr		
032	C00020024				петля люка (30912)		
033	C00019668				пластинка петли		
034	C00019845				bolt t 1/2 t m4x8		
035	C00046666				хомут сливного шланга		
036	C00019664				rear cover - white	0106552	
036	C00049515				панель задняя белая 27		
037	C00003144				заглушка для отверстий d.11		
038	C00019685				держатель сливного шланга		
039	C00048298				держатель фрикционный		
040	C00049070				сцепление		
041	C00048304				пружина нажимной ручки		
042	C00057701				плата управления dialogic	0106543 n1040019 n1040032	
043	C00046127				шарнирный палец ящика		
044	C00049411				комплект рукоятки смотр.окна		
045	C00001412				люк в сборе		
099	C00014855				винт + шайба m8 x 90		
099	C00023798				spacer pvc 60mm.'str.80'		

1060290

Exploded views

Matr.51218.0001



1060290

1060290

Spare parts list

Ref.	Code	С сер.№	По	Substitute	Description	Notice	Industrial
001	C00039671				винт крепления ведомого		
002	C00039670				шайба для шкива 1000 g (21106)		
003	C00029794				ремень poly-v l= 1194 mm		
004	C00044768				ведомый шкив		
005	C00044765				подшипник 6206-2z		
006	C00044763				крестовина с уплотнит.	n1040034	
007	C00019667				пластинка крестовины		
008	C00046542				противовес верхний 10 кг		
009	C00019849				шайба 37x8,5x2		
009	C00037346				прокладка кольцевая		
010	C00030443			1 x C00047136	nut romob m8		
011	C00049071				tank suspension spring		
012	C00019675				кольцо зажимное пружины		
013	C00030387				шланг реле давления 150 mm		
014	C00021774				тройник трубки реле давления		
015	C00041192				air trap hose 370 mm.		
016	C00038865				винт m 8 x 60 рез. 25		
017	C00019755				устройство противоударное		
018	C00019730				воздухоуловитель		
019	C00027990				зажим 78-85		
020	C00044809				труба гофрированная сливная		
021	C00030389				усиление сливной		
022	C00023840				винт m6 x 80 для главного		
023	C00003018				clamping band tank front		
024	C00036780				кольцо крепежное заднее geaz		
025	C00033041				зажим передний 856 mm		
026	C00019714				усиление трубки возврата		
027	C00030385				труба сбора мощ.средства		
028	C00019722			1 x C00065005	bellows seal	n1040041	
028	C00051879				нитриловая прокладка		
028	C00065005				прокладка смотрового окна		
029	C00036952				винт m 8 x 45		
029	C00052574				чугунный передний нижний		
030	C00023841				гайка квадратная m6 для		
031	C00038672				bolt m8 x 55		

1060290

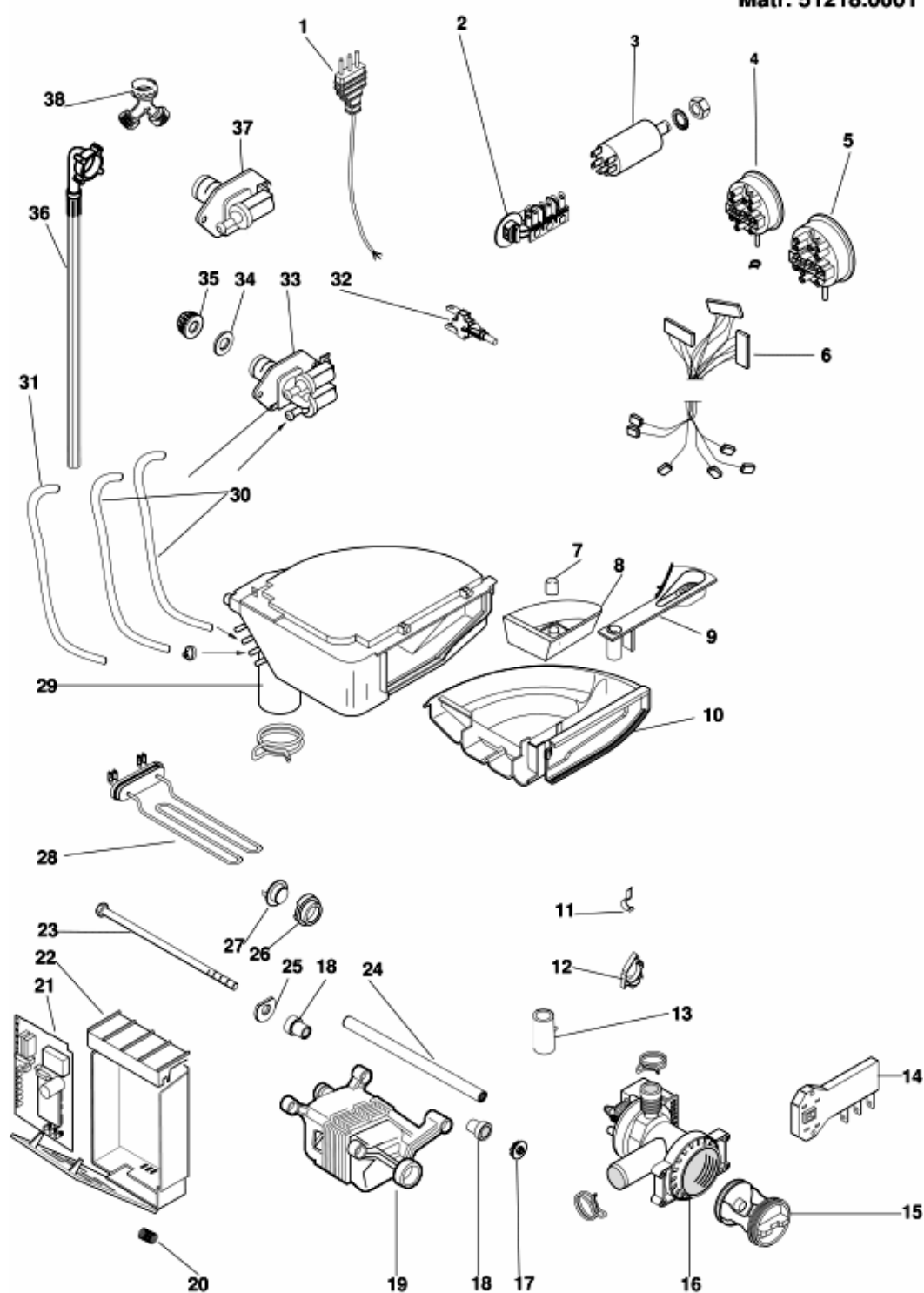
Spare parts list

Ref.	Code	С сер.№	По	Substitute	Description	Notice	Industrial
032	C00031029				крышка нерж.ванны		
033	C00020941				прокладка нерж.крышки ванны		
034	C00044762				барабан 1100/1200 gg два		
035	C00038358				метрический винт m8x16 (с		
036	C00027923				сильфон загрузки		
037	C00043434				stainless tub		
038	C00046142				nut metalbloc m10		
039	C00037132				винт + шайба m4x12 tmt из	n1040300	
040	C00037133		1 x C00037132		seal		
041	C00037142		1 x C00037132		washer 4x12x1 stainless		
042	C00037135				гайка самоблокирующаяся m4		
043	C00037083		1 x C00037177		heater bracket		
044	C00044764		1 x C00082696		standard oil seal 1100/1200 rpm		
045	C00013563				подшипник 25 x52 x 15 6205 -		
046	C00030445				винт m8 x 25 zntr		
047	C00030341				пружинная шайба 10,5 x 17,5 x		
048	C00030392		1 x C00030339		rubber cup washer		
049	C00030339				опора верхняя амортизатора		
050	C00030338				опора амортизатора		
051	C00030446				винт m10 x 45 zntr		
052	C00030340				амортизатор 80 n		
053	C00027466				спир.сливной шланг с коленом	0106552	
053	C00051738		1 x C00091775		сливной шланг		
054	C00019902				опора спиральн. сливн. шланга		
055	C00048324				датчик проводимости dialogic		
056	C00058523				комплект направл. сопротивл.		
099	C00001109				loctite 270 10 г.		
099	C00033026				упаковка смазки amblijg ta 100 г.		

1060390

Exploded views

Matr. 51218.0001



1060390

1060390

Spare parts list

Ref.	Code	C cep.№	По	Substitute	Description	Notice	Industrial
001	C00022357			1 x C00024521	supply cable 3x1 schuko l= 2,70 m		
002	C00029204				terminal block box elettrogibi	0106552	
002	C00041163				terminal block		
003	C00047063			1 x C00043435	radio interference suppressor		
004	C00048317				реле давления, 1-уровн. 315/240		
005	C00030394				реле давления 1-уровн. 108/85		
006	C00048322				wiring dialogic ad10eu		
007	C00046157				крышка отдел.моющ.ср.		
008	C00046152				отделение присадок вращ.ящик		
009	C00046154				голубая крышка одел.присадок		
010	C00046148				вращ.ящик моющего средства	n1040047	
011	C00044808				air trap clip		
012	C00046667				зажим для проводки		
013	C00048324				датчик проводимости dialogic		
014	C00011140				микрозамедлитель		
015	C00045023				рукоятка фильтра askoll/plaset		
015	C00045025				прокладка фильтра askoll/plaset		
015	C00045027				насосный фильтр askoll/plaset		
016	C00044998				асинхр. самоочищ. насос 240		
017	C00002407				шайба 6,4x13x1,5		
018	C00019682				втулка держателя двигателя, 20		
019	C00043430			1 x C00097257	тахометр двиг.ice 16p		
019	C00047317			1 x C00196539	щетка двигателя		
019	C00048052				коллекторный		
020	C00048321				пружина держателя модуля		
021	C00056981				диалог.силовая плата	0106543	
022	C00048320				bracket - power module		
023	C00019964				винт двигателя m6 x 212te		
024	C00019965				распорка двигателя		
026	C00014917				прокладка термостата		
026	C00020181				пробка отверстия термостата		
027	C00015856				термостат 1t 87ø с пс		
027	C00053573				белый температурный зонд		
028	C00033055				сопротивл. с тепловым		
029	C00046151			1 x C00066347	бункер + крышка		

1060390

Spare parts list

Ref.	Code	С сер.№	По	Substitute	Description	Notice	Industrial
030	C00046669			1 x C00015498	hose valve to dispenser (hot) 400		
032	C00030358				зам.-разм. выключатель вкл-		
033	C00047185				двойной электроклапан 7 lt.		
034	C00005572				прокладка заливочного шланга		
035	C00005781				фильтр заливочного шланга		
036	C00003070				залив.шланг 1500 mm		
099	C00052828				зажим blitz bz 6140 r 14x6		

Notices

0106537: INITIALIZATION OF CONTROL CARD

An examination of the data collected from the Dialogic washing machines in which the control card had been replaced shows that the permanent memory has not been initialised.

In fact, since the replacement cards are normal production cards, the permanent memory is not initialised when supplied; this operation is carried out automatically during the line test.

The initialisation process is mainly concerned with the ability of the program to determine the water hardness automatically at the first wash. If this initialisation is not carried out, a default average water hardness is assumed. If the value of the water hardness is in fact average, then pre-washes and rinses will not be affected by malfunctions. However, problems may arise if the water is soft or very hard.

To avoid any malfunction of the conductivity sensor, which may result in excessive rinses or the incorrect execution of prewashes, the control card must be initialised every time it is replaced. To do this, use one of the following procedures:

---The quick procedure, using the washing machine control panel.

This procedure is simple, and therefore recommended. For a detailed explanation of the procedure, refer to the section "Updating the water hardness measurement" in the Dialogic washing machine manual.

---The extended procedure, using a PC. This procedure requires further information regarding the date and the country. It is based on the LBSAT.EXE program used by the Technical Service personnel, and is carried out as follows:

- connect the PC to the washing machine
- switch on the washing machine
- start the LBSAT.EXE program (any program release may be used)
- select the Eeprom menu
- press the INIT (^I) button
- ensure that the message "Initialisation successfully completed" appears after 2-3 seconds, otherwise check for proper connections and repeat the procedure.

.eol

0106541: UNIFICATION OF DOOR HINGES

In order to reduce the variety of spare parts being utilized, we would like to point out that the glass door with part no. 028304 can be used in place of the one with part no. 019671 on all the ARISTON brand models produced at the Comunanza factory.

0106543: MODIFIED CONTROL CARDS (AD10-AD12)

On the AD10EU, AD10IT, AD10UK and AD12EU washing machines, the initialization software has been modified (together with the replacement of the 1.01 microprocessor with the 2.01 version). Therefore, the control cards have been diversified as follows:

Part no. 057701 - AD12EU Control Card (yellow mark);

Part no. 057723 - AD10 EU and AD10IT Control Cards (white mark);

Part no. 057722 - AD10UK Control Card (blue mark).

The new cards can be identified by the coloured mark on the transformer.

Beginning with serial no. 80819.0001 on the AD10 Dialogic appliances, the REMCO power card (part no. 056981) is being used, which has already been adopted for the AD12EU model. It is interchangeable with the pre-modification one (part no. 048319) only if the control card is also replaced with the new one.

To avoid errors in the future, the control card with part no.

048311 will be eliminated from all documents, and any stock left may be used on the AD10EU, AD10IT and AD10UK appliances with serial numbers before 80819.0001.

0106552:

Beginning with serial no. 80825.0001 on the Dialogic washing machines and washer dryers, AB, AL and AB..C, AL..C, the rear cover, outlet hose, terminal block and cushion frame cabinet have been changed.

The items subjected to new modification are:-

Dialogic:

Cod. 049515 Rear cover;

Cod. 051738 Outlet hose;

Cod. 041163 Terminal block.

Washing machines and washer dryers AL / AB AL..C / AB..C

Cod. 049515 Rear cover;

Cod. 051738 Outlet hose;

Cod. 041163 Terminal block.

The modified cabinets keep the same SAT codes as the pre-modification ones, and in order to maintain the same interchangeability, they are handled assembled with rear panel and terminal block.

This modification also applies to cabinets which are no longer produced but still handled as spares. Therefore, in cases where the cabinet is modified, it is necessary to use rear cover cod. 049515 and terminal block cod. 041163.

n1040015: Top depth reduction

Top depth was reduced in Super-Margherita and Giugiaro washing machines, with serial number 81012.0001 and 81022.0001, respectively.

The new tops are interchangeable with the pre-modification ones and the SAT codes 046139 (530 mm depth) for Super-Margherita and 044821 (530 mm depth) for Giugiaro remain unchanged (Historical consumption requirement).

Due to the presence of large stocks, the pre-modification tops 061931 Super-Margherita (540 mm depth) and 061932 (544 mm depth) Giugiaro were re-coded.

n1040019: Error signalling from control board

From serial number 90101.0001 to 90415.0001, the control boards of Dialogic, AD10IT, AD10EU, AD12EU and AD12BE washing machines can signal the F03 error code. In standard conditions, the code is associated with a defect of the temperature probe. In the above-mentioned machines (and only in them) the code is associated with the control board that must be replaced.

n1040024: Tubs and counterweights

Beginning from serial no. 90412.0001 tubs with the top counterweight fixing bracket displaced from the central to the rear area or counterweights heavier than 10 kg (code 046542) have been used in some models of washing machines produced in the Comunanza plant.

List of affected models and codes:

AL1256TXTK, AL1243TXNL, AL1256TXSTDE, AL1256TXEX, AL1256TXSTR, AD12EU and AD12BE
(Beginning from serial no. 90426.0001 also in models WA1051X, WG1230TXD, WG1231TXEU, WG1231TXO, WG1238TXO and WG1138TXO)

The stainless steel tub code 030380 has been replaced with the stainless steel tub code 043434.

AL1257TUK and AD12UK (Beginning from serial no. 90426.0001 also in models WG1233TGUK, WG 1234TGUK, WG1230GUK, WG1230TBE, WG1135TO, WG1235TO, WG1335TO and WG1385WGUK)

The enamelled tub code 031647 has been replaced with the enamelled tub code 043567.

A1100UK and A1300UK

The enamelled tub code 057055 has been replaced with the enamelled tub code 063733.

AL125WFR and EWA1200NL (Beginning from serial no. 90426.0001 also in models WG1285 and WG1185WG/1UK)

The enamelled tub code 057055 has been replaced with the enamelled tub code 063733.

AL125WFR and EWA1200NL (Beginning from serial no. 90426.0001 also in models WG1235TXEX, EWA1000NL, AL1056TXEX and AL638TX)

The stainless steel tub code 055716 has been replaced with the stainless steel tub code 060298.

S1200UK and A1100UK

The counterweight code 019757 has been replaced with counterweight code 046542.

Beginning from serial no. 90426.0001 in models WA1451X, AL1456TXEX, AL1456TXR, AL1456TXSTDE, AL1453TXNL, AL1456TXBE and AL1456TXTK the stainless steel code 043434 has been replaced with the stainless steel tub code 030380.

n1040032: New Dialogic control board software (2.12)

Beginning from serial number 90531.0001 the new software 2.12. has been introduced in the control board (white sticker) code 057723 used in the Dialogic AD10IT washing machine in replacement of the old software 2.01.

The boards with software 2.12 can be used on the premodification appliances and are handled with the same SAT code. The

boards with software 2.01 can only be used until the arrival of the new boards.

All the control boards used in the Dialogic production will be provided with the new software by June.

Code 057723 - Control board with white sticker;
AD10IT
AD10EU
AD10SKD

Code 057722 - Control board with blue sticker;
AD10UK

Code 057701 - Control board with yellow sticker;
AD12EU
AD12BE

Code 058062 - Control board with green sticker;
AD12UK

Code 061941 - Control board with red sticker; (Only with the new software 2.12);
AD8EU
AD7IT

In order to facilitate the identification of the new boards, the microprocessor has been provided with a label with the software version (2.12).

n1040034: New aluminium tub in replacement of cast-iron tub

Beginning from serial no. 90412.0001 the cast-iron tub star wheel code 044763 will be produced in aluminium in the washing machines and washer-dryers.

The new star wheel is interchangeable with the premodification one and the SAT code remains unchanged.

In order to avoid any balancing problem of the oscillating group when the aluminium star wheel replaces the cast-iron star wheel, it is necessary to move the position of the tub springs forward by one step (rear part in the cabinet and front part in the tub bracket).

n1040041: Door seals

On some of the Washing-Machine models manufactured at the Comunanza factory, the following door seals have been used:

Serial no. 90614.0001 the door seal part no. 065006;

Serial no. 90621.0001 the door seal part no. 065005.

The new door seals for the models concerned by this information are interchangeable with the pre-modification ones, but not vice-versa.

The door seal part no. 056743 will continue to be handled normally, as it is used on other models being produced, whereas part no. 019722 is being discontinued and replaced by part no. 065005 door seal.

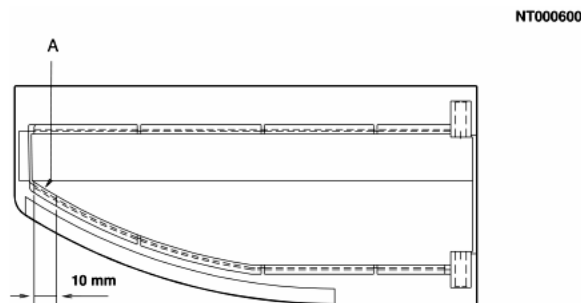
n1040047: Modification to the swivel drawer

Beginning with serial no. 90901.0001 on all washing machines in the following ranges: Dialogic AD, Supermargherita AL - LA - AB - BA- ALS - LAS - ABS - BAS, and other EWA, S, A, CD, ML.S, WDS, SG, LB, WMS, MLT and MLTI, the swivel drawer was modified.

The modified drawer keeps the same SAT code (part no. 046148); if it is used on pre-modification appliances, part of the internal rib on the handle has to be removed, as indicated in the figure below.

If the control panel plus handle have to be replaced, verify whether this has to be done or not by checking the serial no. and handle used.

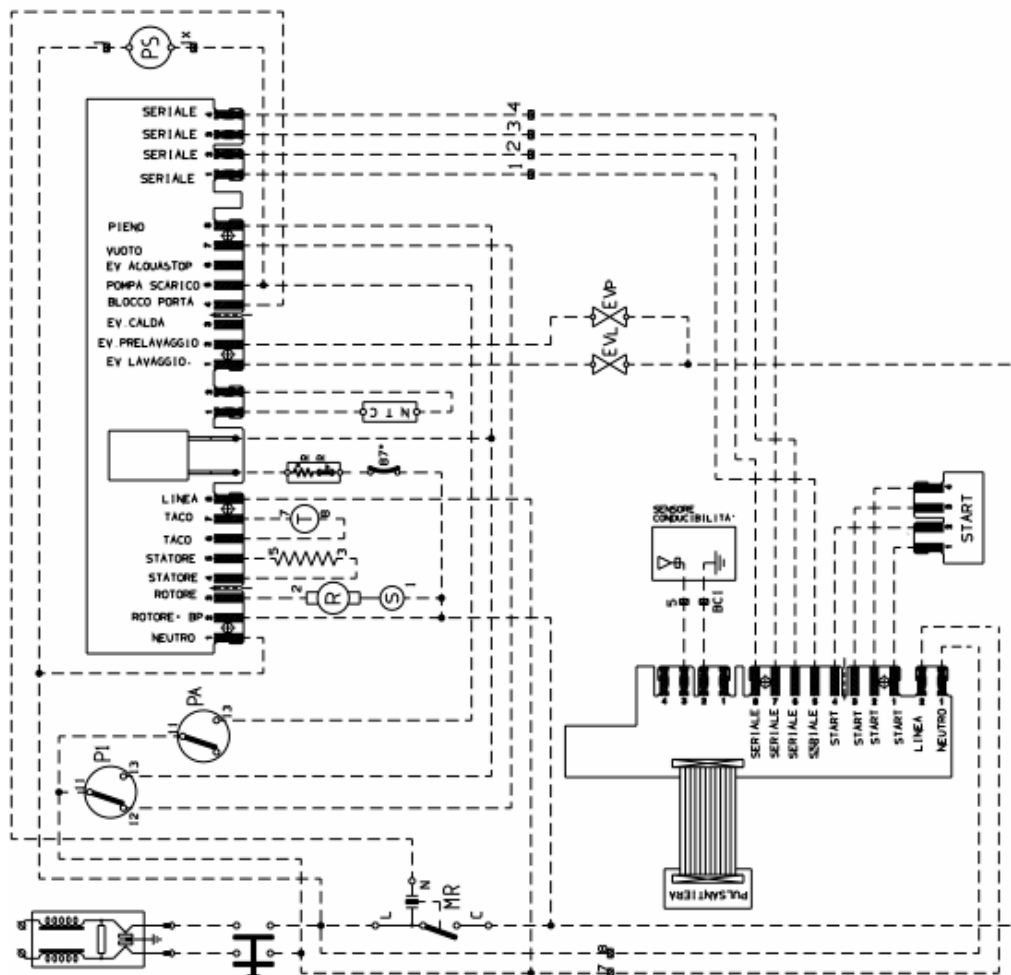
A - To assemble the new drawer, remove the highlighted area of the rib (with the aid of a cutter or a file) from the pre-modification handles.



Electric schemes and links

Cod. 106455b

1074511A



Legend

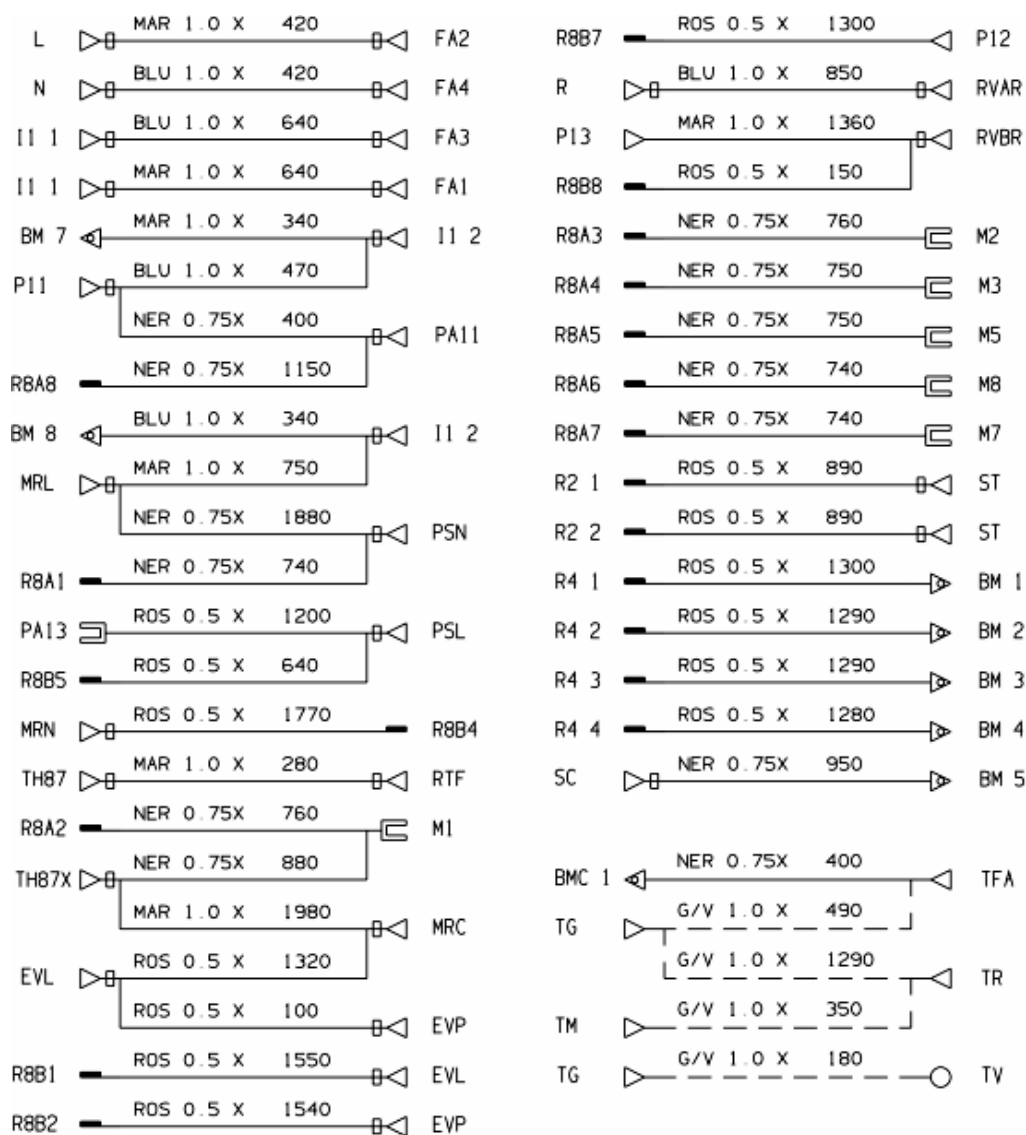
Legend: 106455b

AQS	Aquastop electrovalve	Mzbn/MTA	zbn timer motor
B	Buzzer	N	Neutral or Terminal Board
BC	Blocco Cesto	NC	Spin cycle exclusion
BF	Terminal board contact, motor fan and dryer	P	Pressure switch
BP	Buzzer	P1	1st level pressure cut-off switch
C	Condensator	P2	2nd level pressure cut-off switch
CA	Condensator	PA	High speed potentiometer
DV	Switching device	PB	Low speed potentiometer
EF/CL	Electro-Valve Cold Water / Bleach	PL	Pure Wool
EF/L	Electro-Valve Cold Water / Wash	PM	Motor Thermoprotector
EF/P	Electro-Valve Cold Water / Prewash	PR	Timer programmer or Pressure switch
ER	Exclude Heating Element	PS	Drain pump
ET	Thermostat disactivation	R	Heating element
EV	Electrovalve	RE	Relay
EVA	Dryer electrovalve	RR	Heating element
EVC	Hot water electrovalve	RV	Speed regulator
EVF	Elettrovalvola acqua fredda	Ras/RA	Dryer heating element
EVL	Wash electrovalve	S	LED
EVP	Pre Wash electrovalve	SL	Line LED
FA	Antijamming filter	SO	Door LED
FD	Delicate drying cycle thermostat	SR	Heating LED
FE	Strong drying cycle thermostat	ST	Temperature selector
FRT	Thermofusible Heating Element	SV	Speed Selector for Spin
I	Inverter	T	Timer contacts
II...2...3..	Switches/switching devices	TA	Drying timer contacts
IA	Switch On/Off	TB	Low Temperature Thermostat
IC	Switch N.C. - 1/2 Load	TC	Spider wheel earth
ID	Switch display	TFL	Flange earth
IE	Water Saving Device	TG	Main earth
IF	Switch - Spin Reduction	TH	Thermostat
IP	Door switch	TH1	1st temperature thermostat
IR	Line switch	TH2	2nd temperature thermostat
IS	Water-stop	TH3	3rd temperature thermostat

L	Line or Lamp	THF	Operating thermostat
LB	Low Level	THR	Adjustable thermostat
LN	Normal Level	TM	Motor earth
LS	Pilot lamp	TMB	Main cabinet earth
M	Earth-symbol	TMP	Motor thermal protector
MC	Spin cycle motor	TMS	Thermostop
MI	MOTOR WITH PULLEY	TP	Thermal protector
ML	Wash cycle motor	TPS	Drain pump earth
MO	Terminal Board	TR	Heating element earth
MP	Door dip-switch	TS	Safety thermostat
MR	Thermal Lock	TT	Timer earthing connection
MT	Timer motor	TTH	Earthing Thermostat
MV	Motor fan	TV	Tank earth
MV -Ras	Dryer heating element	ZBN	Timer

Electric schemes and links

Cod. 106455c



Legend

Legend: 106455c

AQS	Aquastop electrovalve	Mzbn/MTA	zbn timer motor
B	Buzzer	N	Neutral or Terminal Board
BC	Blocco Cesto	NC	Spin cycle exclusion
BF	Terminal board contact, motor fan and dryer	P	Pressure switch
BP	Buzzer	P1	1st level pressure cut-off switch
C	Condensator	P2	2nd level pressure cut-off switch
CA	Condensator	PA	High speed potentiometer
DV	Switching device	PB	Low speed potentiometer
EF/CL	Electro-Valve Cold Water / Bleach	PL	Pure Wool
EF/L	Electro-Valve Cold Water / Wash	PM	Motor Thermoprotector
EF/P	Electro-Valve Cold Water / Prewash	PR	Timer programmer or Pressure switch
ER	Exclude Heating Element	PS	Drain pump
ET	Thermostat disactivation	R	Heating element
EV	Electrovalve	RE	Relay
EVA	Dryer electrovalve	RR	Heating element
EVC	Hot water electrovalve	RV	Speed regulator
EVF	Elettrovalvola acqua fredda	Ras/RA	Dryer heating element
EVL	Wash electrovalve	S	LED
EVP	Pre Wash electrovalve	SL	Line LED
FA	Antijamming filter	SO	Door LED
FD	Delicate drying cycle thermostat	SR	Heating LED
FE	Strong drying cycle thermostat	ST	Temperature selector
FRT	Thermofusible Heating Element	SV	Speed Selector for Spin
I	Inverter	T	Timer contacts
II...2...3..	Switches/switching devices	TA	Drying timer contacts
IA	Switch On/Off	TB	Low Temperature Thermostat
IC	Switch N.C. - 1/2 Load	TC	Spider wheel earth
ID	Switch display	TFL	Flange earth
IE	Water Saving Device	TG	Main earth
IF	Switch - Spin Reduction	TH	Thermostat
IP	Door switch	TH1	1st temperature thermostat
IR	Line switch	TH2	2nd temperature thermostat
IS	Water-stop	TH3	3rd temperature thermostat

L	Line or Lamp	THF	Operating thermostat
LB	Low Level	THR	Adjustable thermostat
LN	Normal Level	TM	Motor earth
LS	Pilot lamp	TMB	Main cabinet earth
M	Earth-symbol	TMP	Motor thermal protector
MC	Spin cycle motor	TMS	Thermostop
MI	MOTOR WITH PULLEY	TP	Thermal protector
ML	Wash cycle motor	TPS	Drain pump earth
MO	Terminal Board	TR	Heating element earth
MP	Door dip-switch	TS	Safety thermostat
MR	Thermal Lock	TT	Timer earthing connection
MT	Timer motor	TTH	Earthing Thermostat
MV	Motor fan	TV	Tank earth
MV -Ras	Dryer heating element	ZBN	Timer